



# BYE BRA

*your secret solution*

COLLECTION 2022

## Contents

Adhesive bras	P. 05
Tapes	P. 13
Pull-ups & Lifts	P. 21
Underwear	P. 31
Invisible shapewear - light control	P. 41
Seamless shapewear - medium control	P. 57
Sculpting shapewear - high control	P. 63
Powermesh shapewear	P. 75
Accessories	P. 85

### **Your secret solution**

Bye Bra is a specialist in shaping, strapless and backless solutions.

### **An inclusive collection**

Our products are conceived to empower all women unleashing their femininity in total safety; regardless of age, size, body type or skin tone. We offer a wide range of strapless and backless adhesive solutions allowing any woman to wear any outfit in total comfort. Most products range from A to E cup with specific items up to H.

With 4 shapewear lines (S to XXL) with different shaping power (low, medium, high), we are able to satisfy the needs of every client.

We also offer a wide range of nipple covers, underwear solutions and bra accessories.

### **A never out of stock collection**

Our full collection is permanent and never out of stock, so retailers do not have to worry about end of season markdowns. Replenishments are fast and easy as all our products are available in stock in the Nederland.

Customer satisfaction is high and return rates are negligible, making Bye Bra the perfect complement to an existing lingerie, evening dresses or bridal collection.

### **Certified & guaranteed quality**

At Bye Bra we put the health & safety of our customers at the core of our work. Our adhesive products are the safest available on the market. We work with world leading suppliers of medical tapes and glues 3M and Henkel.

All our products are dermatologically approved, non-irritating, hypoallergenic and REACH (Registration, Evaluation, Authorization and Restriction of Chemicals) compliant.





## Products

Gala bra



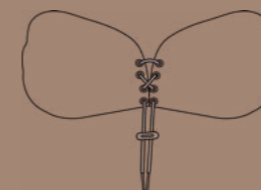
Seamless u-style bra



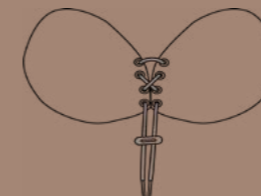
U-style bra



Lace-it bra



Round lace-it bra



Invisible bra



We offer a wide range of adhesive bras in multiple styles, tones and finishing.

All styles are designed to offer a strapless and backless solution and range from Cup A to E (with the exception of the invisible bra). Check the size chart at the bottom of the page to find your perfect fit.

The product lines are extremely clean and minimal as we eliminated visible stitches whenever possible.

The different colors are matching the rest of the products in our collection, so that you can build a set by combining an adhesive bra with a shapewear bottom, padded panties or our laser cut underwear.

The lace finishing adds an extra touch of femininity to the functionality and minimal design of the garments.

All bras are reusable up to 25 times. All they need is a bit of care. They can be delicately hand washed paying extra care for the adhesive part.

All our bras are dermatologically approved, non-irritating and hypoallergenic.

Expert tip:

- Make sure your skin is clean from lotions and creams as this will compromise the effectiveness of the adhesive.
- The adhesive protective films have to be stored and reapplied on the products after using it for ultimate preservation of the glue.



Size table  
Bra's

	A	B	C	D	E
EU CHN JPN KOR	70A 75A 70B	80A 85A 80B	80B 85B 75C 70D	80C 85C 75D 70E	80D 85D 75E 80E
UK	32A 34A 32B	36A 38A 34B	36A 38A 34B	36C 38C 34D 32DD	36D 38D 34DD 36DD
USA	32AA 34AA 32A	36AA 38AA 34A	36AA 38AA 34A	36B 38B 34C 32D	36C 38C 34D 36D
FR ES PT	85A 90A 85B	95A 100A 90B	95A 100A 90B	95C 100C 90D 85E	95D 100D 90E 85E
AUSTRALIA NZL	10A 12A 10B	14A 16A 12B 14B	14A 16A 12B 14B	16C 12D 10E	14D 16D 12E 14E



GLABRA

*Gala bra*

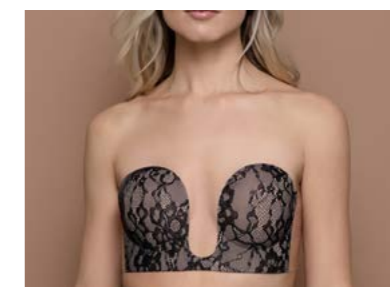
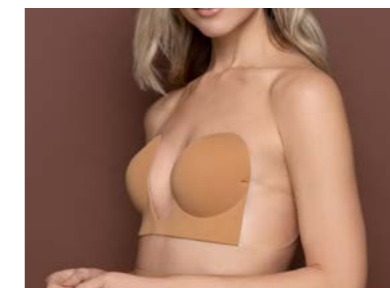
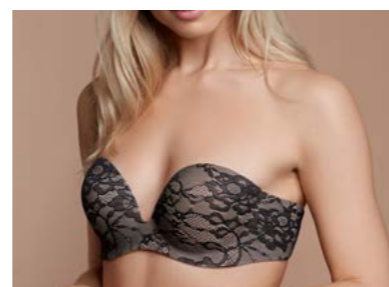
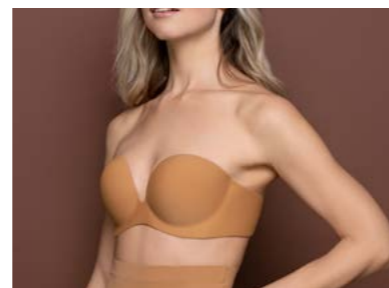


SUSBRA

*Seamless u-style bra*

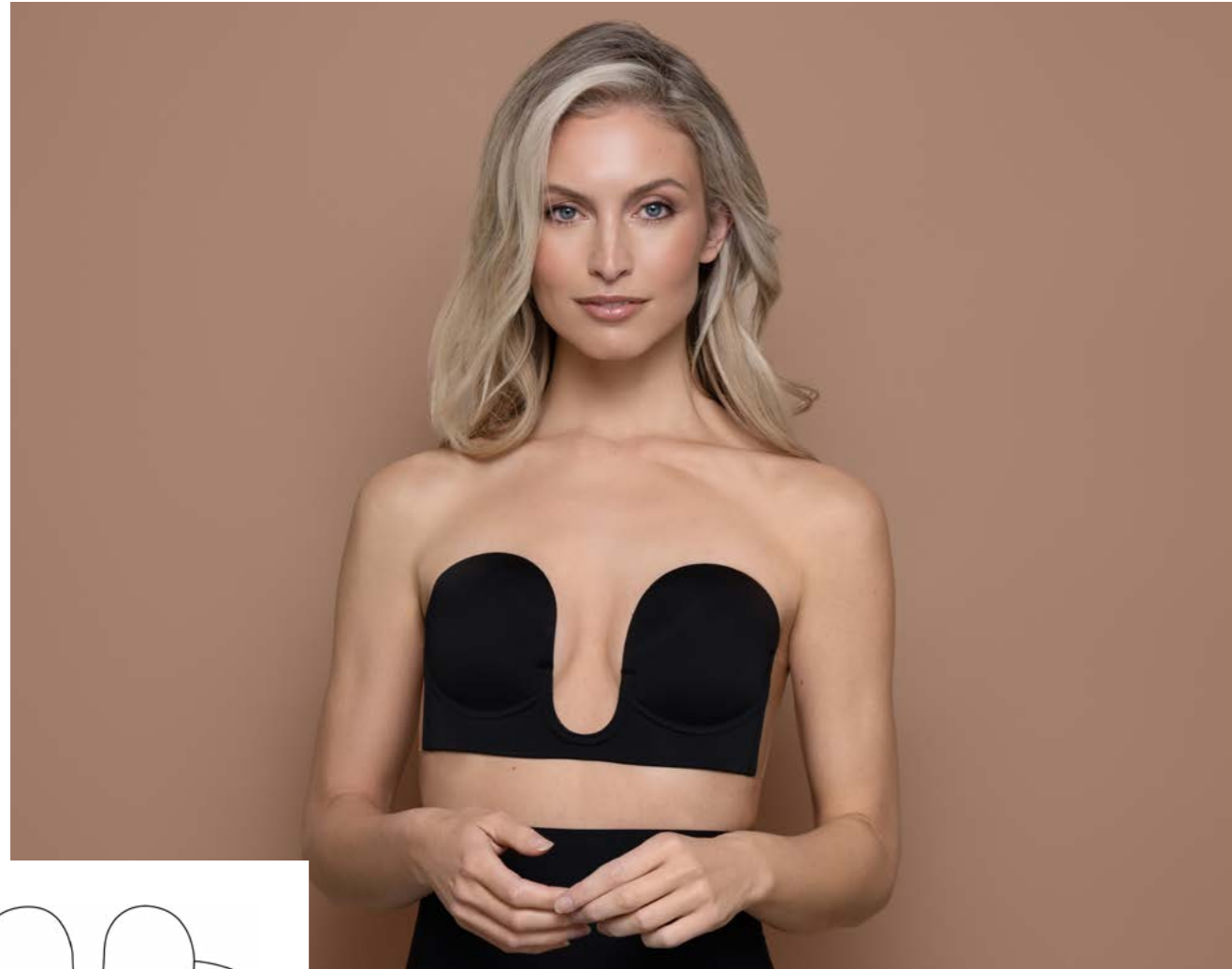
- Strapless & backless
- Seamless
- Smooth finish
- Reusable up to 25 times

- No stitching
- Smooth design
- Strapless and backless
- Deep plunge
- Reusable up to 25 times



	Beige	L.brown	Black	Lace
A	934N	1295	938N	952N
B	935N	1296	939N	953N
C	936N	1297	940N	954N
D	937N	1298	941N	955N
E	950N	1299	951N	956N

	Beige	L.brown	Black	Lace
A	1041	1575	1046	1605
B	1042	1576	1047	1606
C	1043	1577	1048	1607
D	1044	1578	1049	1608
E	1045	1579	1050	1609



USTBRA

*U-style bra*

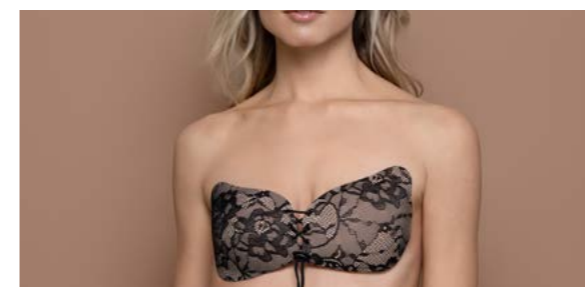
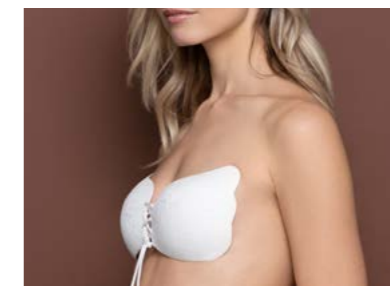
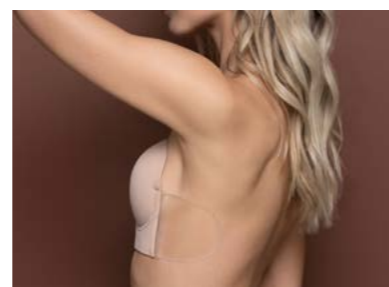
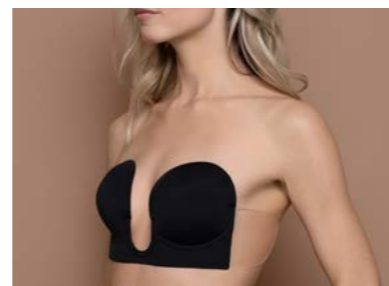


LCTBRA

*Lace-it bra*

- Deep plunge
- Strapless & backless
- Transparent side wings
- Reusable up to 25 times

- Seamless
- Push-up effect
- Strapless and backless
- Reusable up to 25 times



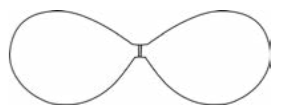
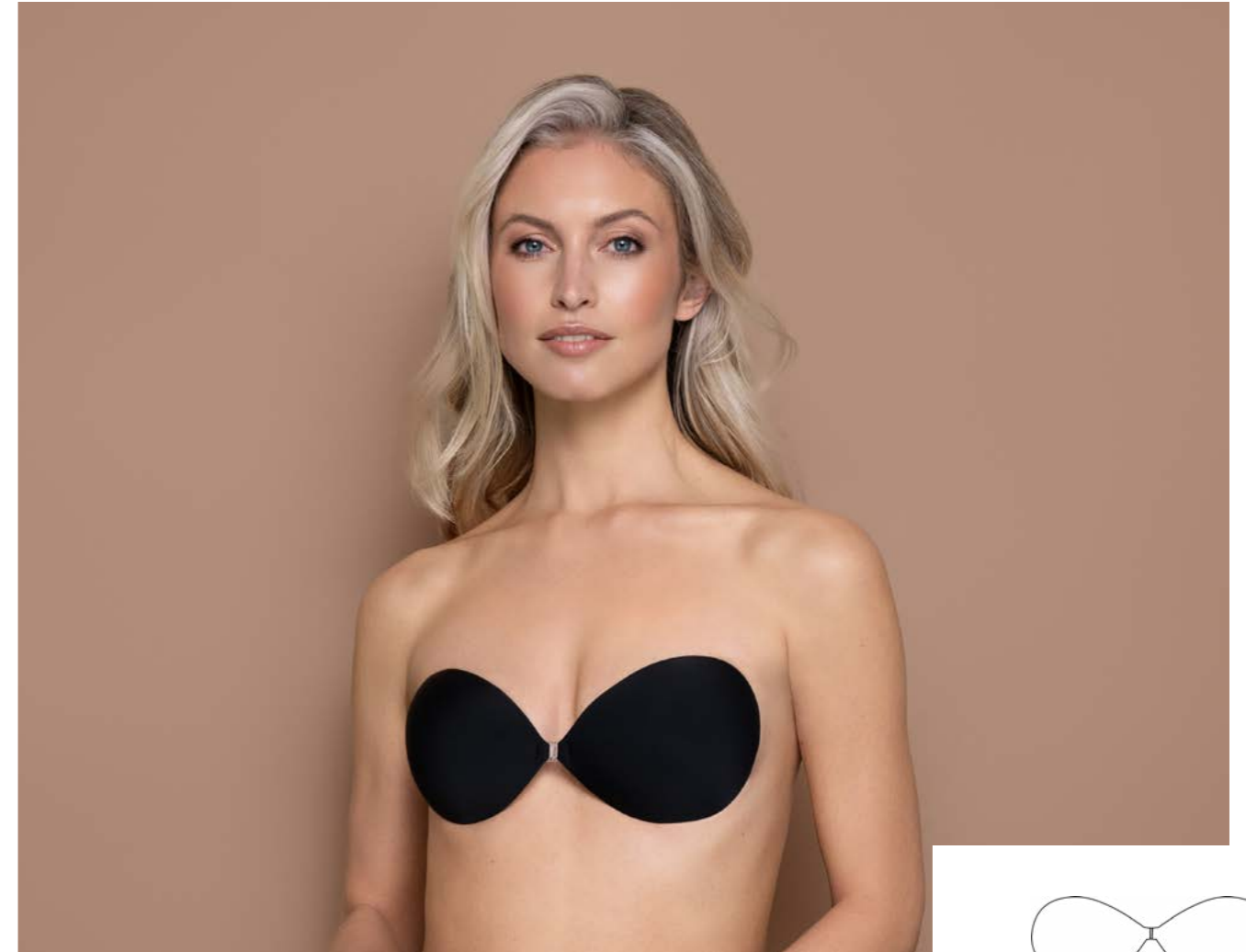
	Beige	Black
A	918N	923N
B	919N	924N
C	920N	925N
D	921N	926N
E	922N	927N

	Beige	Black	Lace	White	L.brown
A	902N	907N	1600	944N	1580
B	903N	908N	1601	945N	1581
C	904N	909N	1602	946N	1582
D	905N	910N	1603	947N	1583
E	906N	911N	1604	948N	1584



RLCBRA

*Round lace-it bra*



INVBRA

*Invisible bra*

- Seamless
- Push-up effect
- Strapless & backless
- Reusable up to 25 times

- Strapless and backless
- Reusable up to 50 times

	Beige	Black	Lace
A	1026	1031	1036
B	1027	1032	1037
C	1028	1033	1038
D	1029	1034	1039
E	1030	1035	1040



	Beige	Black
A	957N	961N
B	958N	962N
C	959N	963N
D	960N	964N

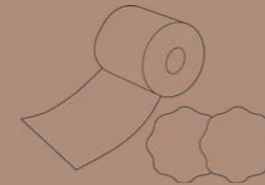


*Products*

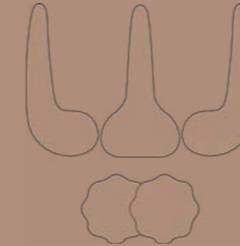
Breast lift tape satin+silicone



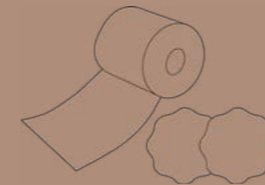
Breast tape roll



Perfect cleavage tape



Body tape



Breast lift pads



Dress tapes



Completely invisible under any outfit, our tapes are the ultimate backless and strapless solutions. They deliver the ultimate nude look and they guarantee a very natural look.

All tapes are single use products. The transparent tapes are made in The Netherlands and out of 3M medical adhesive film. They are dermatologically approved and hypoallergenic.

Waterproof, sweatproof, partyproof... Your best kept secret ;)

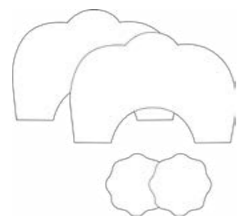
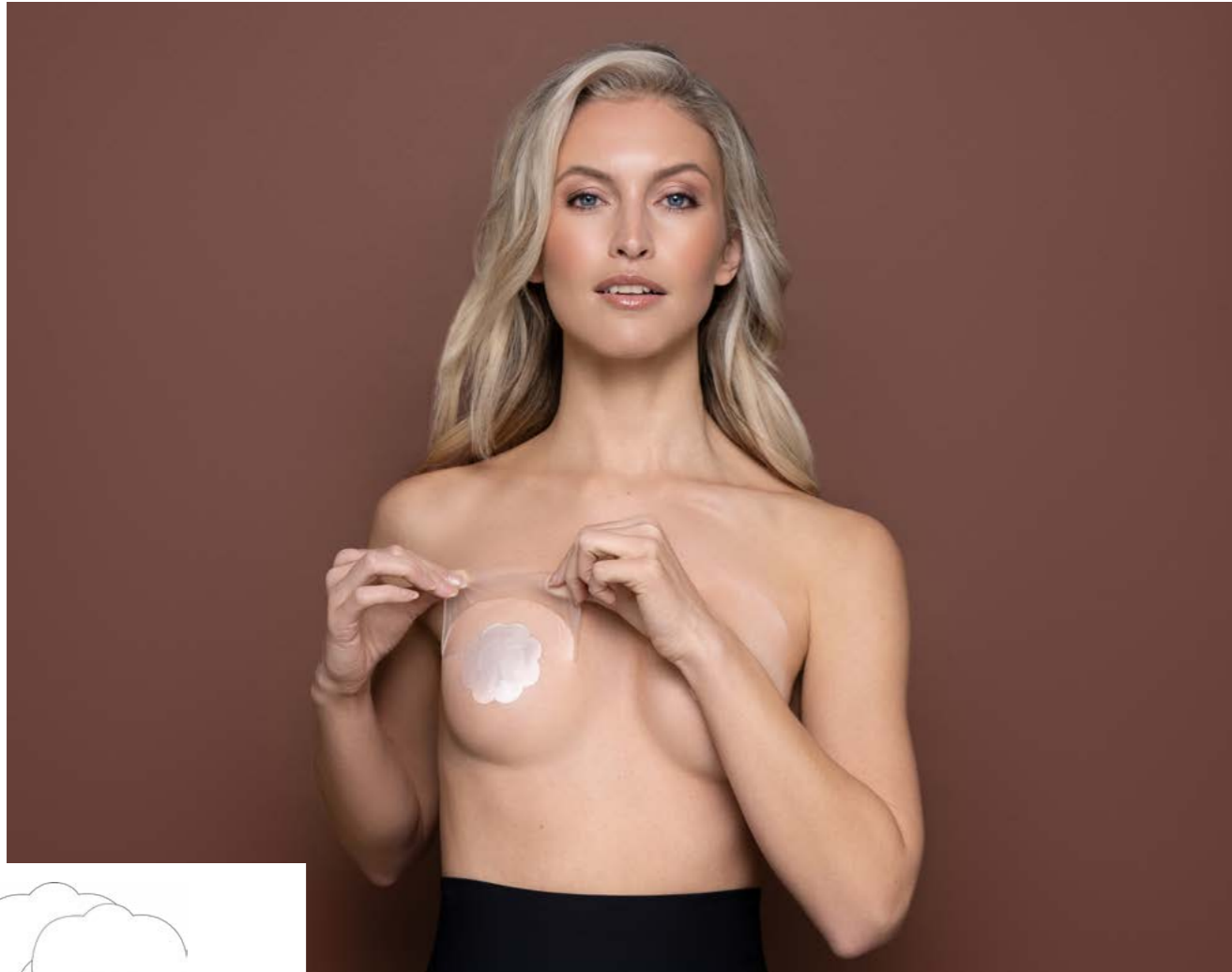
Expert tip:

- Make sure your skin is clean from lotions and creams as this will compromise the effectiveness of the adhesive.
- Follow the visual instructions on the back of the packaging to put them on... it's very easy

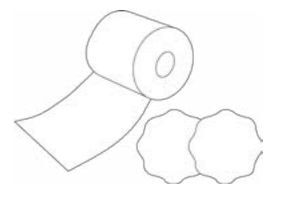


Size table  
Breast lift tapes & Pads

	70	75	80	85	90
<b>A</b>	A-C	A-C	A-C	A-C	D-F
<b>B</b>	A-C	A-C	A-C	D-F	D-F
<b>C</b>	A-C	A-C	D-F	D-F	D-F
<b>D</b>	A-C	D-F	D-F	D-F	F-H
<b>E</b>	D-F	D-F	D-F	F-H	F-H
<b>F</b>	D-F	D-F	F-H	F-H	F-H
<b>G</b>	D-F	F-H	F-H	F-H	F-H
<b>H</b>	F-H	F-H	F-H	F-H	F-H



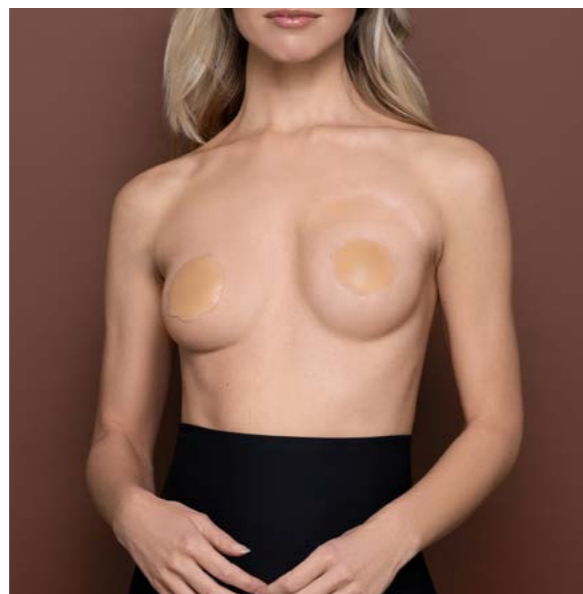
*Breast lift tape*



*Breast tape roll*

BTRSAT

- Ideal for any backless and strapless outfit
- Waterproof
- Ultimate nude look effect
- Made in NL from 3M hypoallergenic medical adhesive
- Available in 3 different sizes for light and dark skin tones
- Contains 3 mono use pairs of tapes and nipple covers

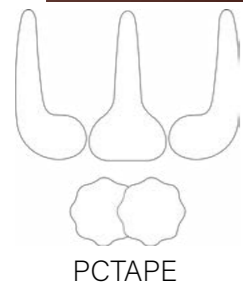


- Suitable for all breast sizes
- Creates perfect cleavage
- Transparent & customizable
- Including beige satin nipple covers
- Tape size is 5cm X 300cm
- + satin nipple covers

Beige  
A-F 974N

	BLTSAT		BLTSIL	
	Beige	Brown	Beige	Brown
A-C	9350N	99350N	9375N	99354N
D-F	9351N	99351N	9376N	99355N
F-H	9352N	99352N	9377N	99356N



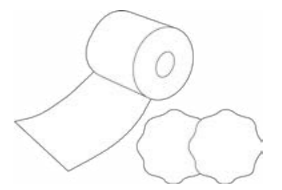
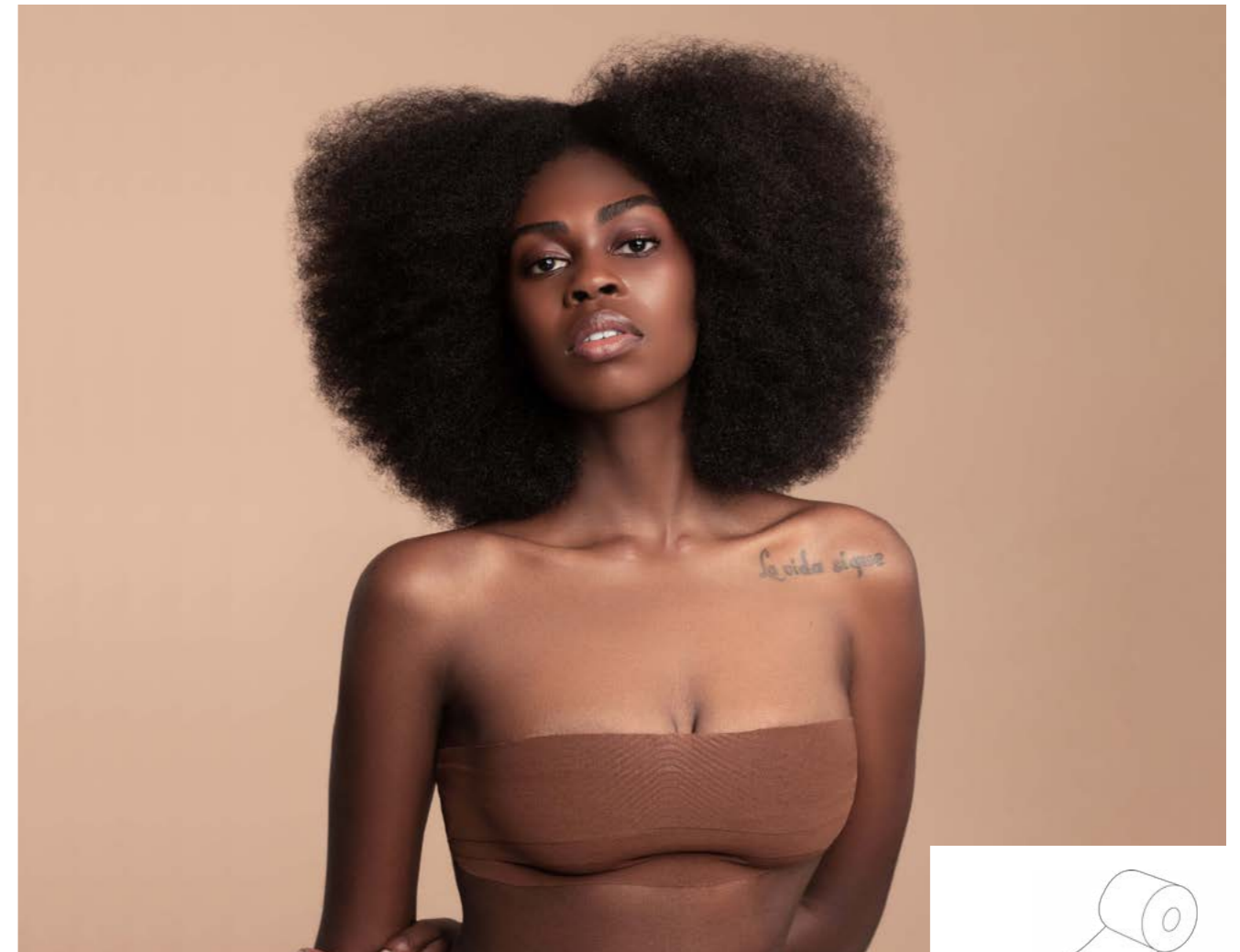


*Perfect cleavage tape*

- Perfect cleavage effect
- Suitable for any backless or crossbody outfit
- Waterproof
- Transparent
- Invisible under clothing



Beige  
A-F 9391N

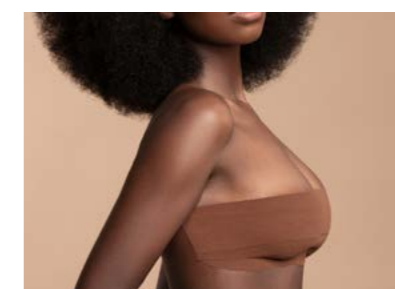
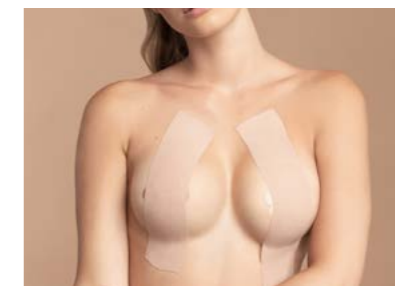
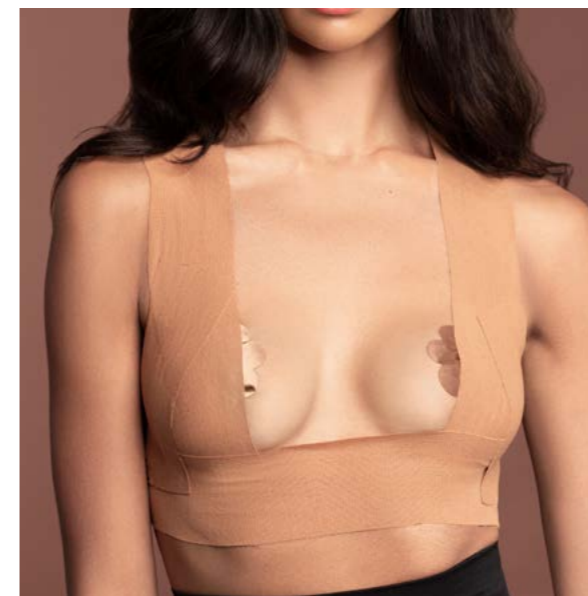


*Body tape &  
Body tape double glue*

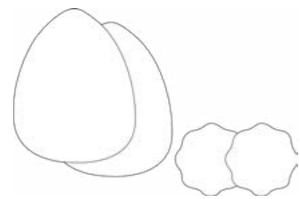
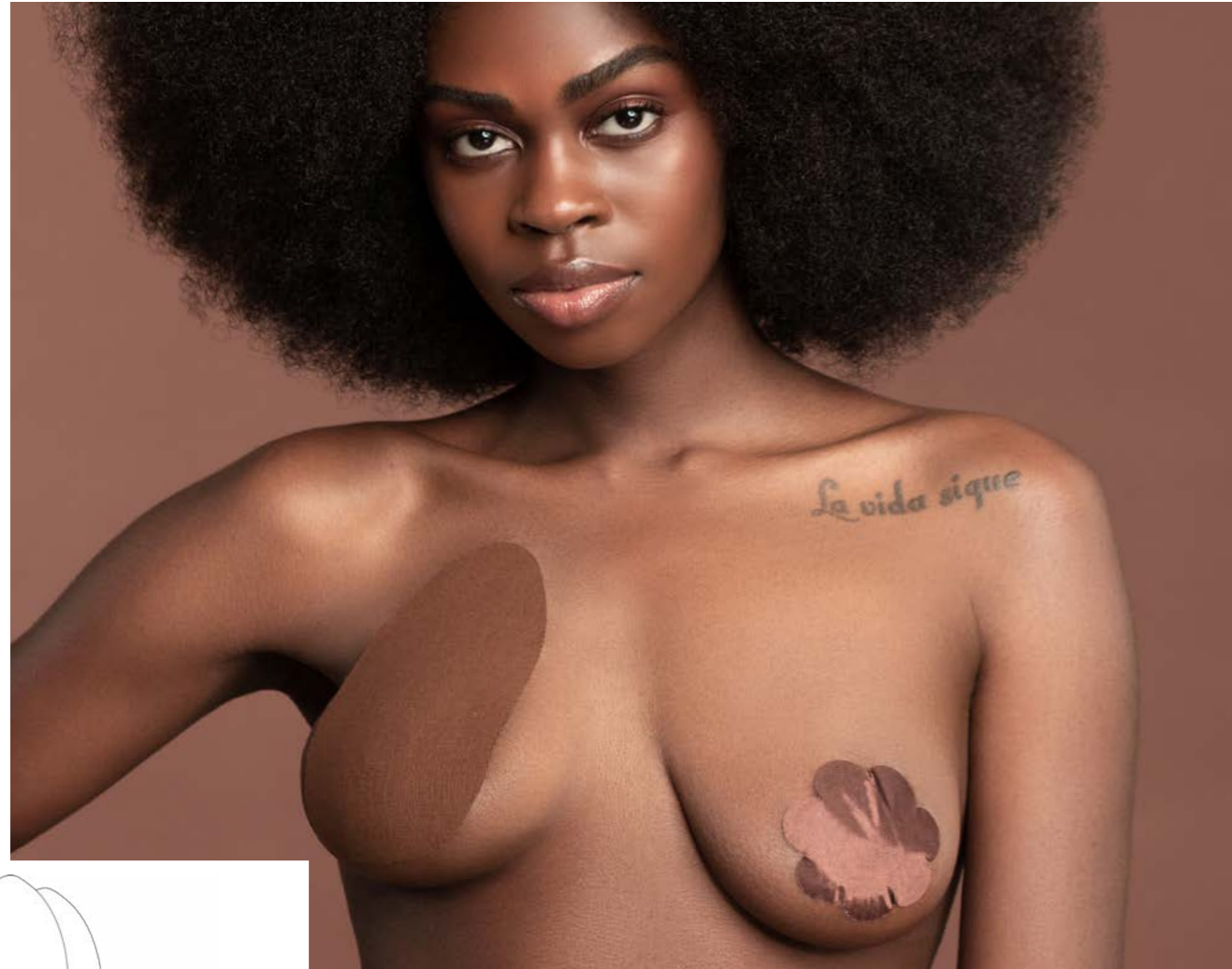
BDTAP6  
BDTAP5  
BDTPDB



- Stretchy & breathable
- Made of cotton
- Invisible & customizable
- Suitable for all breast sizes
- Including 3 pairs of satin nipple covers
- Dermatologically approved
- Hypoallergenic and Non-Irritating
- 6,5cm x 500cm or 5cm x 500cm



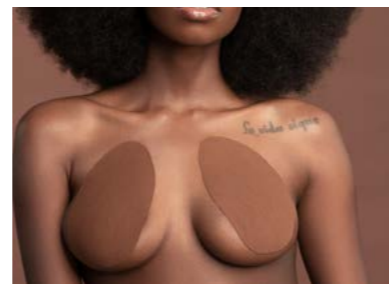
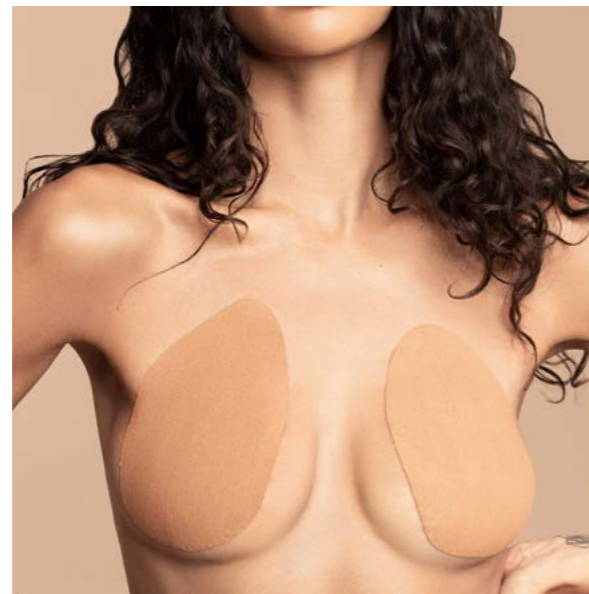
Size	Beige	L.brown	Brown	Black
6,5cm	1250	1251	1252	-
5cm	1566	1567	1568	1569
Double	1560	-	-	1561



BLPADS

## Breast lift pads

- Stretchy & breathable
- Made of cotton
- Suitable until cup H
- Including 3 pairs the Breast Lift Pads & 3 pairs of satin nipple covers
- Easy to apply
- Feels like a second skin
- Dermatologically approved
- Hypoallergenic and Non-Irritating



	Beige	L.brown	Brown
A-C	1256	1260	1264
D-F	1257	1261	1265
F-H	1258	1262	1266

## Dress tapes

### DRTBOX

- Double sided adhesive strips
- 30x transparent strips
- Secures clothes to the skin
- Easy to peel off
- Including metal storage box
- Size: 15 x 80mm

973



### DRTDIS

- Double sided adhesive strips
- Secures clothes to the skin
- Easy to peel off
- Including plastic tape dispenser
- Transparent
- Adjustable length
- Size: 1,5 x 300cm

972



### DRTP3M

- 20 x strips
- Extra wide
- 3M quality
- Transparent
- Size: 25 x 80mm

9390N





*Products*

Silicone pull-ups



Matt silicone pull-ups



Fabric pull-ups



Rabbit pull-ups



Push-up cups



Sculpting silicone lifts



Silicone cups



Multi pull-up



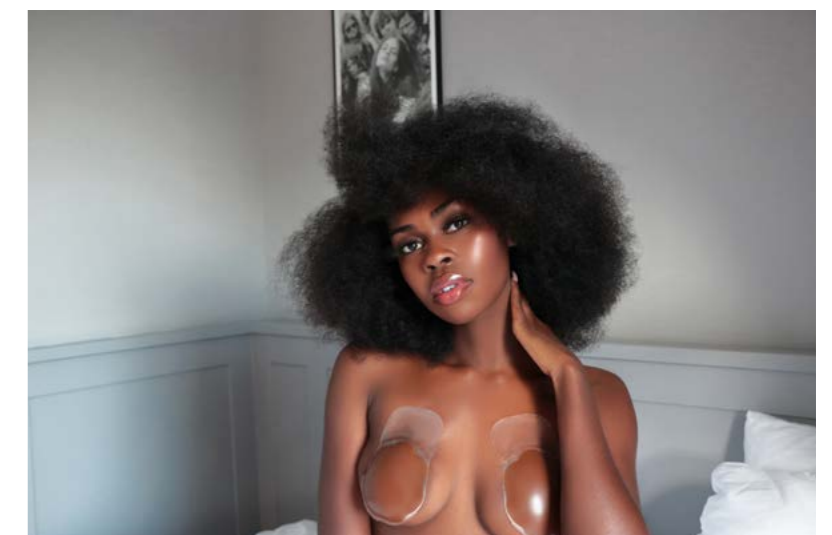
Our Pull-ups and Lifts work on the same fitting principle as our tapes, to deliver a strapless and backless solution. They are made of 100% moulded silicone cups or fabric moulded cups with strong adhesive to create the perfect lift and shape you are looking for.

All products are very durable and reusable up to 25 or 50 times depending on the adhesive.

They are all dermatologically approved and hypoallergenic.

Expert tip:

- Make sure your skin is clean from lotions and creams as this will compromise the effectiveness of the adhesive.
- Follow the visual instructions on the back of the packaging to put them on... it's very easy

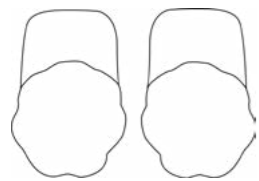
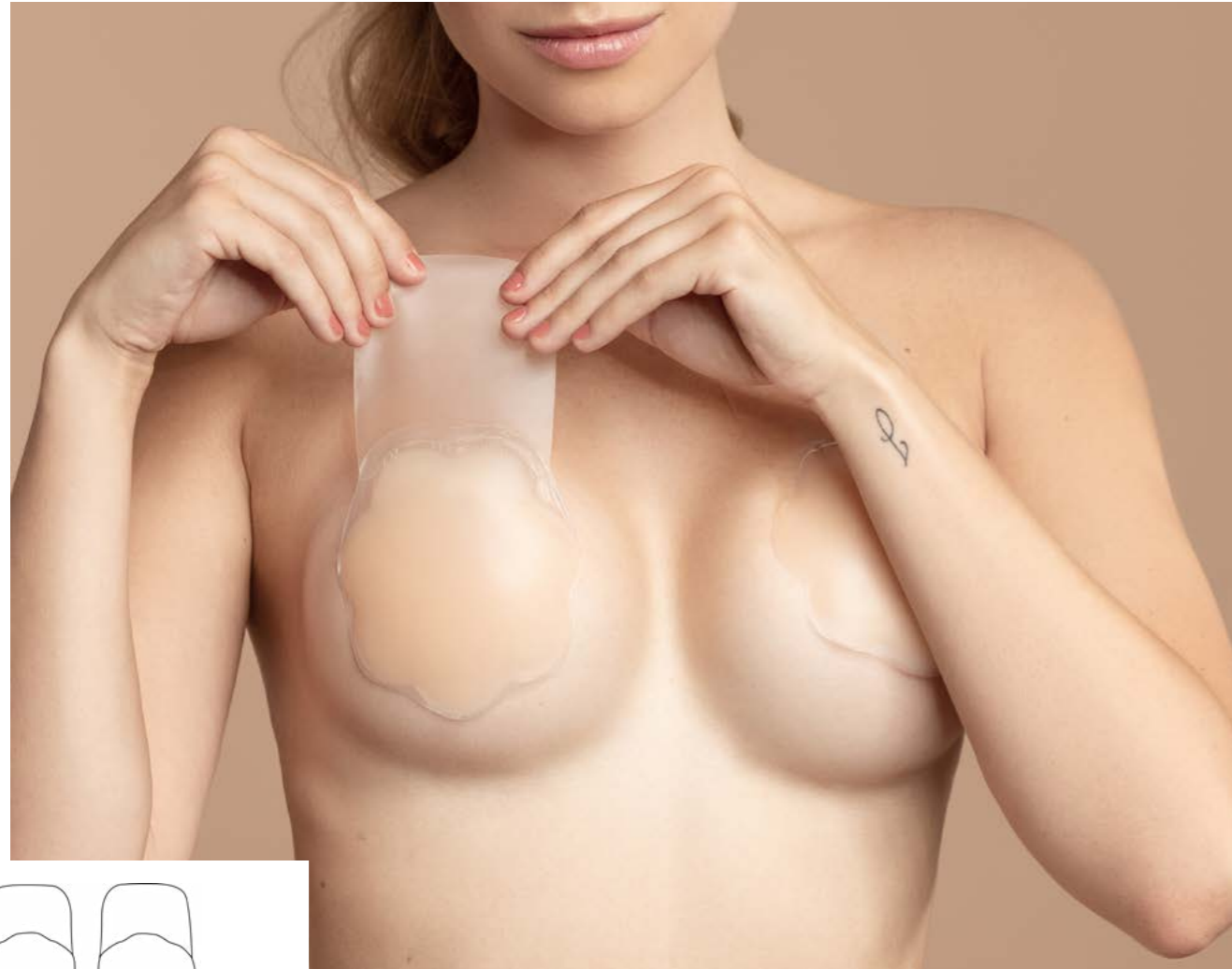


Size table  
Pull ups & Lifts

	70	75	80	85	90
A	M	M	M	M	XL
B	M	M	M	XL	XL
C	M	M	XL	XL	XL
D	M	XL	XL	XL	-
E	XL	XL	XL	-	-

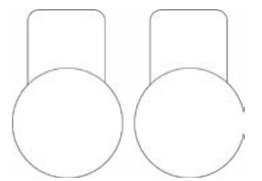
Size table  
Silicone cups & Push-up cups

	70	75	80	85	90
A	A	A	A	A	A
B	A	B	B	B	-
C	B	C	C	-	-
D	C	D	-	-	-
E	D	-	-	-	-



SILPUP

*Silicone pull-ups*



MSLPUP

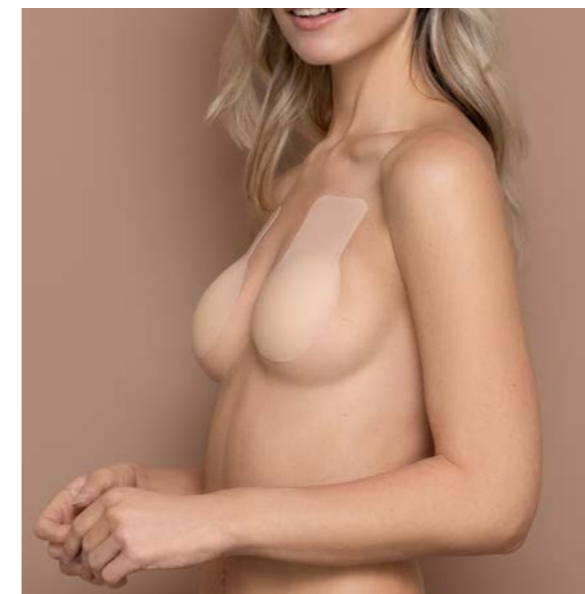
*Matte silicone pull-ups*

- Lifts and shapes
- Invisible under clothes
- Reusable up to 50 times
- Size m = 10cm diameter
- Size xl = 12cm diameter

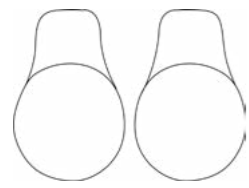


	Beige	Brown
M	975N	1018
XL	992	1025

- Lifts and shapes
- Invisible under clothing
- Reusable up to 50 times
- 100% silicone
- Matt appearance

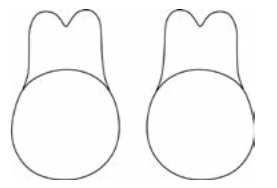
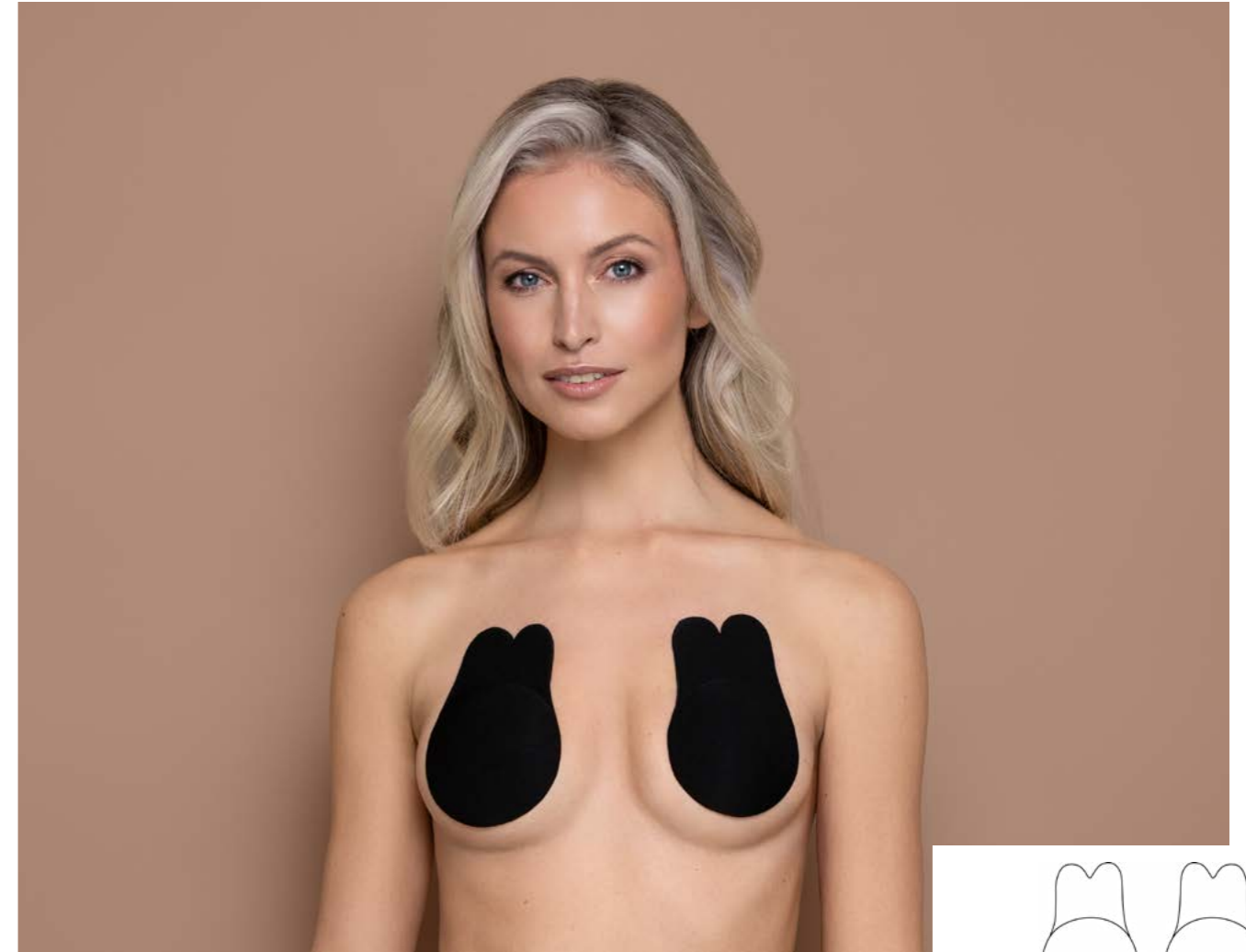


	Beige
M	1395
XL	1396



FABPUP

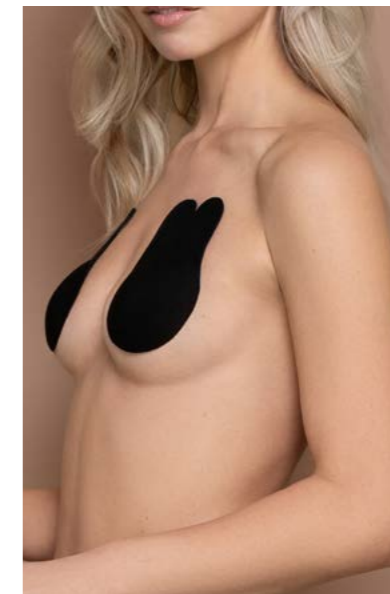
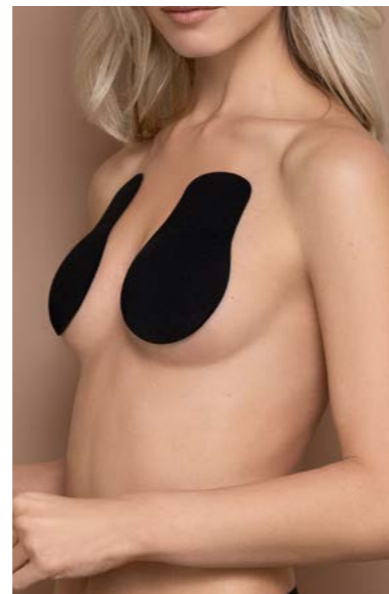
*Fabric pull-ups*



RABPUP

*Rabbit pull-ups*

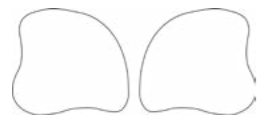
- Invisible
- Light weight & soft fabric
- Stitching and seam free
- Feels like a second skin



- Invisible
- Light weight & soft fabric
- Stitching and seam free
- Feels like a second skin

	Beige	Black
M	990	1082
XL	991	1083

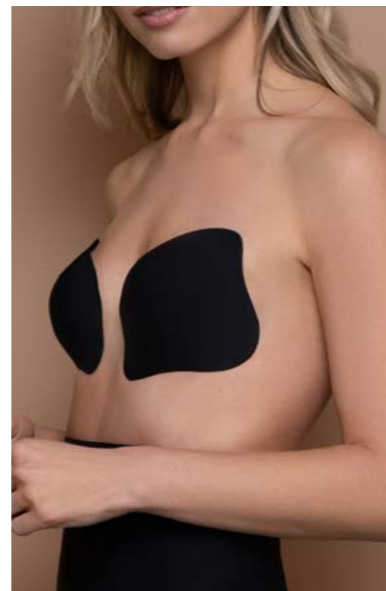
	Beige	Black
M	1084	1086
XL	1085	1087



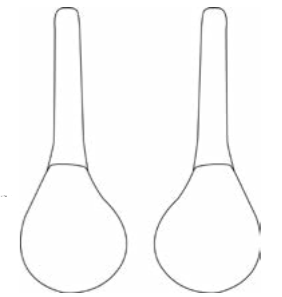
PUPCUP

*Push-up cups*

- Natural Push-up effect
- Lightweight & soft fabric
- Stitching & seamfree
- Reusable up to 25 times



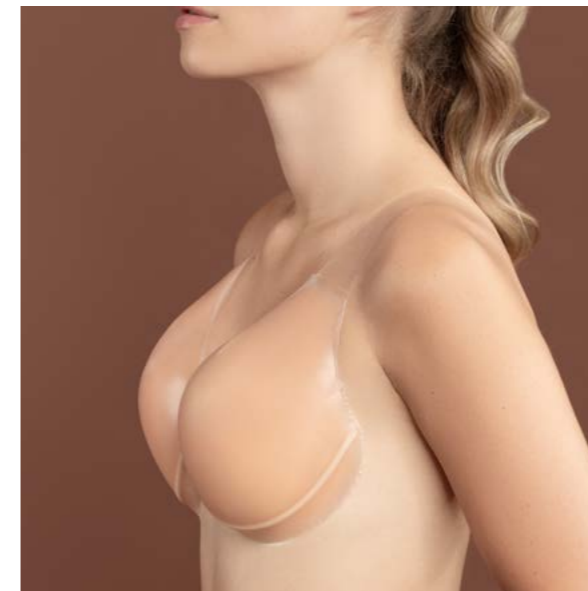
	Beige	Black
A	1745	1749
B	1746	1750
C	1747	1751
D	1748	1752



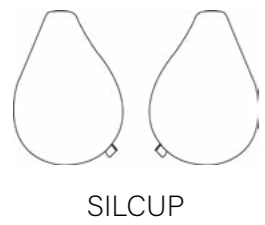
SSLIFT

*Sculpting silicone lifts*

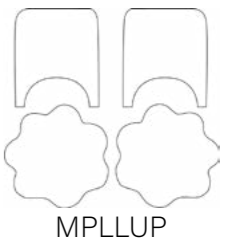
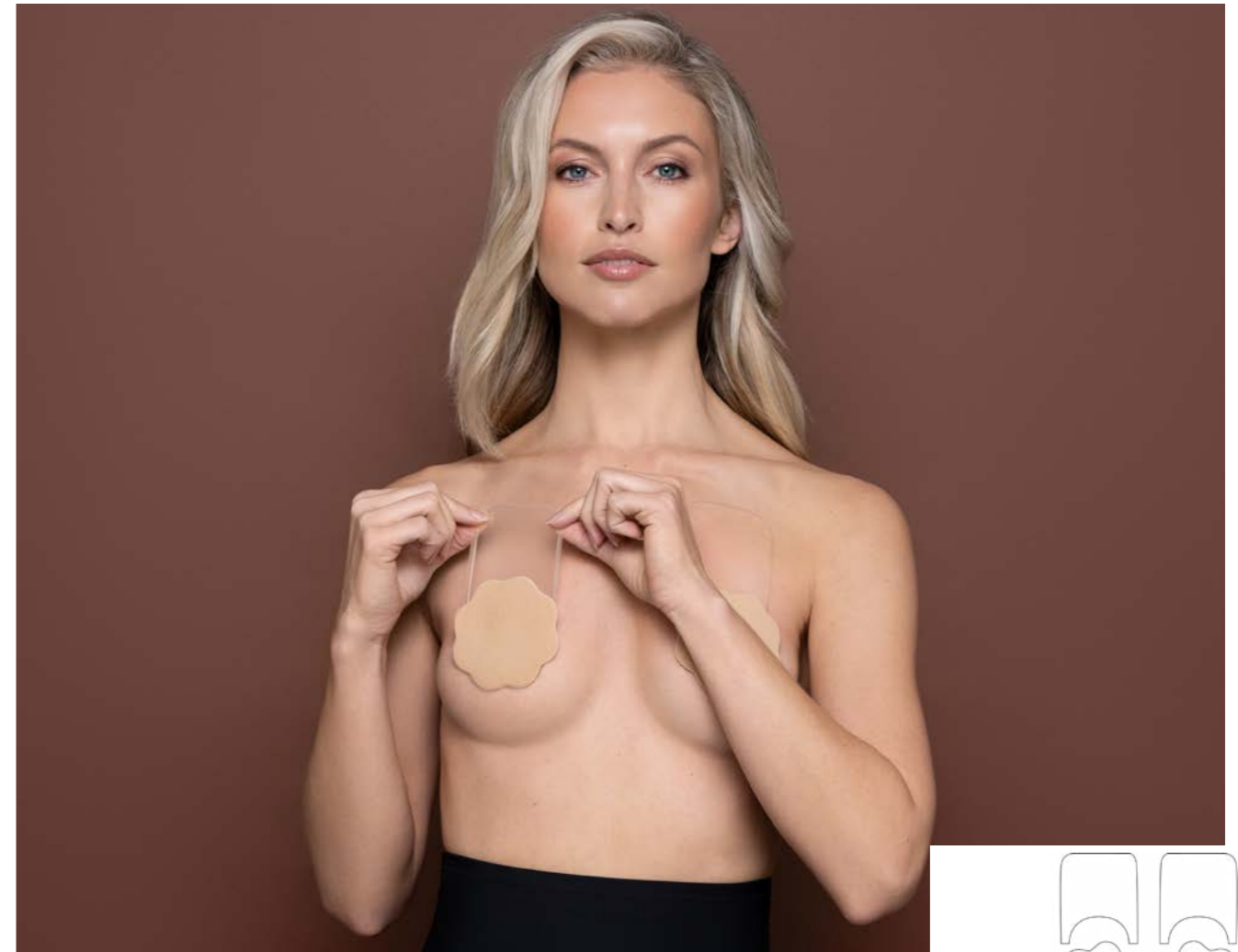
- Lifts and shapes
- Reusable up to 50 times
- 100% silicone



	Beige
C	1090
D	1091
E	1092
F	1093
G	1094
H	1095



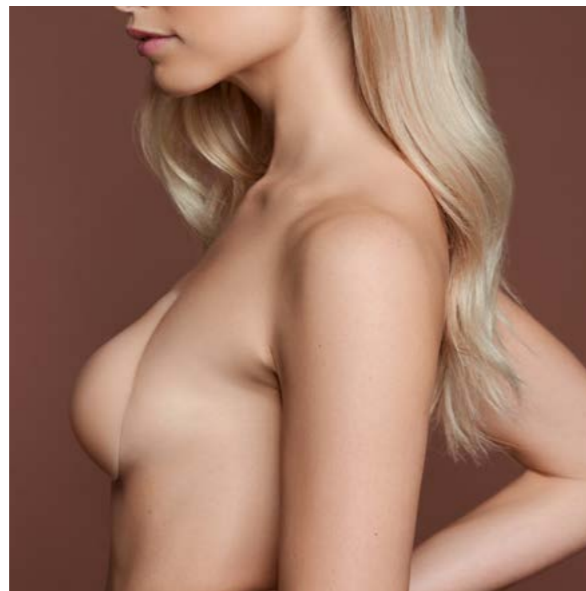
*Silicone cups*



*Multi pull-up*

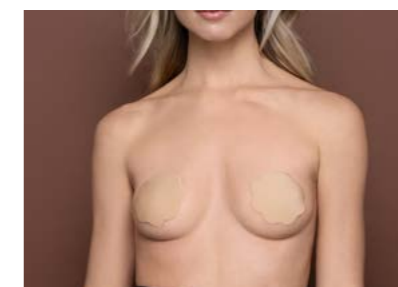
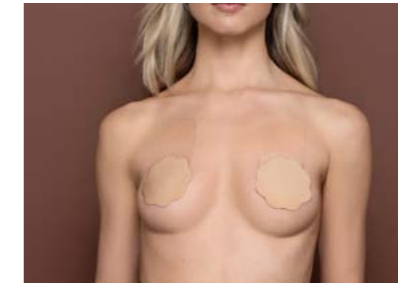
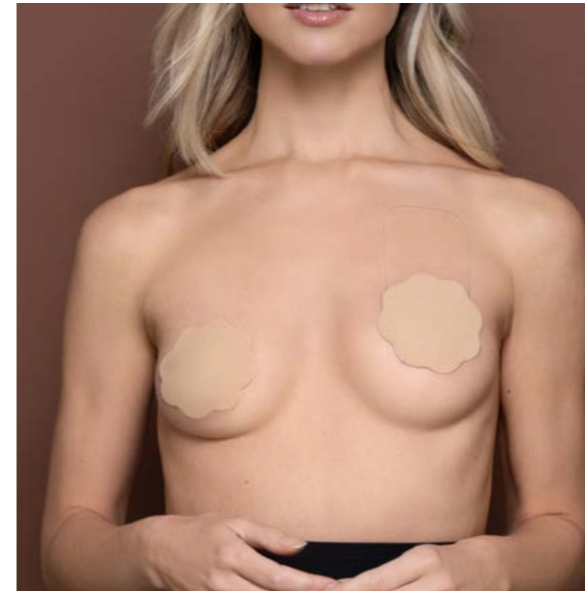
- Lifts and shapes
- Invisible under clothes
- Middle strap creates extra cleavage
- Reusable up to 50 times

NEW  
SIZE C-D



- Lifts and shapes
- Multifunctional use
- Reusable up to 50 times
- Detachable see-through winge
- Nipple cover can be used separately

NEW  
PRODUCT



Beige 1088    Brown 1089

Beige  
A 1080  
B 1081  
C 1079  
D 1078



Products

2-pack thong



2-pack brazilian



2-pack hipster



2-pack high brief



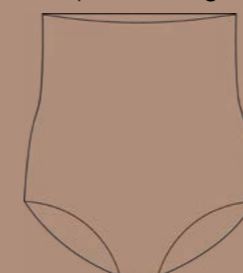
Adhesive thong



Padded panties low waist



Padded panties high waist



For everyday use or for a special occasion, our underwear have all been developed with a specific functionality in mind.

Our laser cut 2-packs are soft and stretchy; perfect for every day. Available in 4 different models are sold in a two pack with a black and a beige piece. The laser cut finishing makes them invisible and comfortable; a must have for your wardrobe.

The adhesive strings will eliminate any lines under your clothes.

Our padded panties will make your butt look fuller and rounder. The high waist version will also help you with tummy control.

Expert tip:

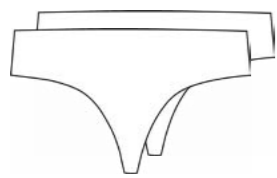
- Enhancing your curves on the back side while controlling your tummy on the front. With our High Waist Padded Panties you get two products for the price of one...



Size table  
Underwear

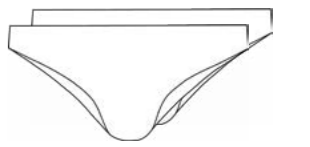
	NL,DE,SCANDINAVIE	FR,ES,PT	IT	UK	US
S	36	38	40	10	8
M	38	40	42	12	10
L	40	42	44	14	12
XL	42	44	46	16	14
XXL	44	46	48	18	16





2PTHNG

*2-pack thong*



2PBRAZ

*2-pack brazilian*

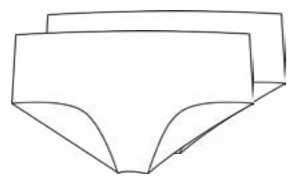
- Invisible
- Lightweight & soft fabric
- Seamless
- Feels like a second skin
- 2 colours in 1 pack



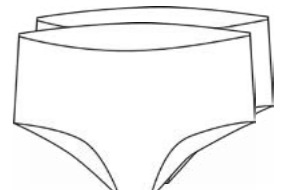
- Invisible
- Lightweight & soft fabric
- Seamless
- Feels like a second skin
- 2 colours in 1 pack

	Thong
S	976
M	977
L	978
XL	979
XXL	1096

	Brazilian
S	1052
M	1053
L	1054
XL	1055
XXL	1098



2PHIPS



2PHBRF

*2-pack hipster*

*2-pack high brief*

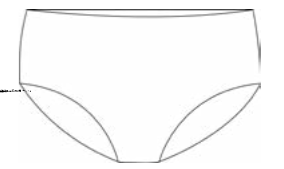
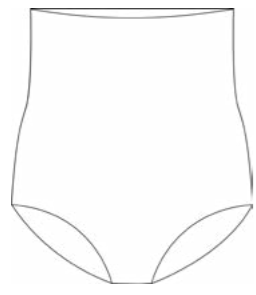
- Invisible
- Lightweight & soft fabric
- Seamless
- Feels like a second skin
- 2 colours in 1 pack

- Invisible
- Lightweight & soft fabric
- Seamless
- Feels like a second skin
- 2 colours in 1 pack



Hipster	
S	985
M	986
L	987
XL	988
XXL	1097

High brief	
S	1057
M	1058
L	1059
XL	1060
XXL	1099



*Padded panties high waist*

*Padded panties low waist*

PADPTYHW

PADPTYLW

- Push-up effect
- Creates a voluptuous, curvier appearance
- Rounder & fuller shape
- Breathable fabric

- Push-up effect
- Creates a voluptuous, curvier appearance
- Rounder & fuller shape
- Breathable fabric



	Beige	Black
S	997N	1306
M	998N	1307
L	999N	1308

	Beige	Black
S	994N	1303
M	995N	1304
L	996N	1305



ADTHNG  
ADTHNGLC

*Adhesive thong*

- Seamless
- Invisible under clothing
- Made of lightweight & ultra-soft material
- Silicone adhesive gel on the front and back
- Reusable up to 25 times



Beige 969N    Black 1070    Lace 970N    Lace 1071





*Products*

Invisible high waist thong    Invisible high waist brief



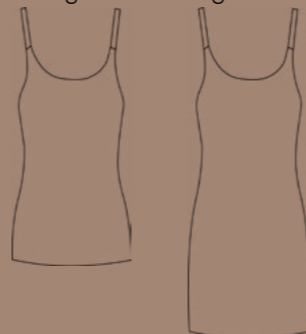
Invisible mid waist thong    Invisible mid waist brief



Invisible short    Invisible skirt



Invisible singlet    Invisible singlet dress



Invisible tanktop    Invisible body



Bra top v-neck    Bra top round neck



Bra top deep plunge    Bra top push up



Our Invisible Shapewear collection covers a wide range of styles in 3 different colors (Beige, Light Brown and Black).

Designed to smooth your figure and shape with comfort. With 20% elastane the collection combines a very soft and cozy handfeel, with a good shaping power.

The entire collection is stitch-free, with hems realized by folding and thermically gluing the fabric.

You can combine tops and bottoms and you can even mix and match with our adhesive products, as the colors are matching.

Expert tip:

- Do not miss our invisible bra tops. One of our different models will become your new favorite. No more uncomfortable wired bras, but supported wire free bras to wear every day in extreme comfort.



Size table  
Invisible shapewear

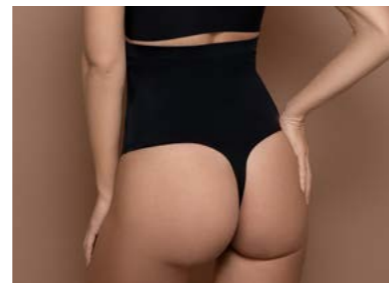
	NL,DE,SCANDINAVIE	FR,ES,PT	IT	UK	US
<b>XS</b>	34	36	38	8	6
<b>S</b>	36	38	40	10	8
<b>M</b>	38	40	42	12	10
<b>L</b>	40	42	44	14	12
<b>XL</b>	42	44	46	16	14
<b>XXL</b>	44	46	48	18	16
<b>XXXL</b>	46	48	50	20	18



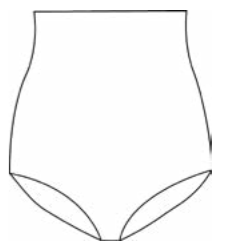
INVHWT

*Invisible high waist thong*

- Invisible
- Lightweight & soft fabric
- Stitching and seam free
- Feels like a second skin



	Beige	L.brown	Black
S	1400	1410	1405
M	1401	1411	1406
L	1402	1412	1407
XL	1403	1413	1408
XXL	1404	1414	1409



INVHWB

*Invisible high waist brief*

- Invisible
- Lightweight & soft fabric
- Stitching and seam free
- Feels like a second skin



	Beige	L.brown	Black
S	1200	1270	1205
M	1201	1271	1206
L	1202	1272	1207
XL	1203	1273	1208
XXL	1204	1274	1209



INVMWT

*Invisible mid waist thong*



INVMWB

*Invisible mid waist brief*

- Invisible
- Lightweight & soft fabric
- Stitching and seam free
- Feels like a second skin
- Light control
- Mid Waist

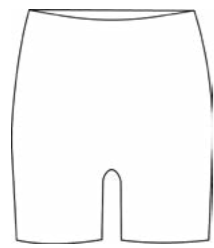


	Beige	L.brown	Black
S	1640	1650	1645
M	1641	1651	1646
L	1642	1652	1647
XL	1643	1653	1648
XXL	1644	1654	1649

- Invisible
- Lightweight & soft fabric
- Stitching and seam free
- Feels like a second skin
- Light control
- Mid Waist



	Beige	L.brown	Black
S	1655	1665	1660
M	1656	1666	1661
L	1657	1667	1662
XL	1658	1668	1663
XXL	1659	1669	1664

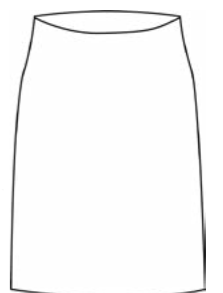


INVSRT

*Invisible short*

- Invisible
- Lightweight & soft fabric
- Stitching and seam free
- Feels like a second skin
- Avoids rubbing thighs

	Beige	L.brown	Black
S	1210	1275	1215
M	1211	1276	1216
L	1212	1277	1217
XL	1213	1278	1218
XXL	1214	1279	1219

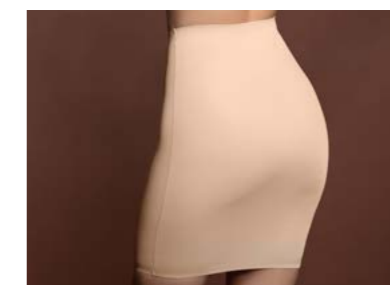


INVSKT

*Invisible skirt*

- Invisible
- Lightweight & soft fabric
- Stitching and seam free
- Feels like a second skin

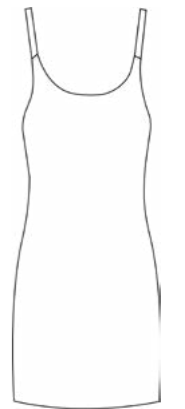
	Beige	L.brown	Black
S	1220	1280	1225
M	1221	1281	1226
L	1222	1282	1227
XL	1223	1283	1228
XXL	1224	1284	1229







INVSING



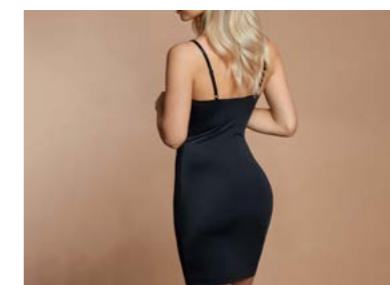
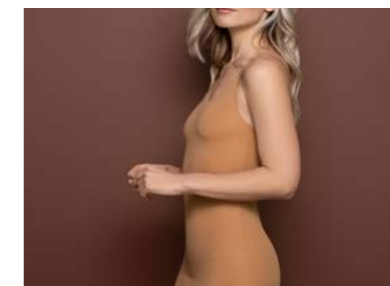
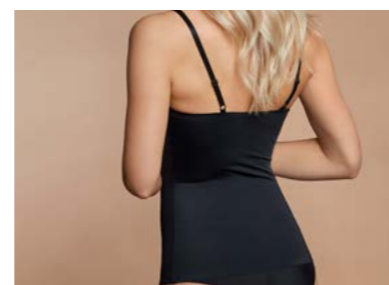
INVDRS

*Invisible singlet*

*Invisible singlet dress*

- Invisible
- Lightweight & soft fabric
- Stitching and seam free
- Feels like a second skin

- Invisible
- Lightweight & soft fabric
- Stitching and seam free
- Feels like a second skin



	Beige	L.brown	Black
S	1230	1285	1235
M	1231	1286	1236
L	1232	1287	1237
XL	1233	1288	1238
XXL	1234	1289	1239

	Beige	L.brown	Black
S	1240	1290	1245
M	1241	1291	1246
L	1242	1292	1247
XL	1243	1293	1248
XXL	1244	1294	1249



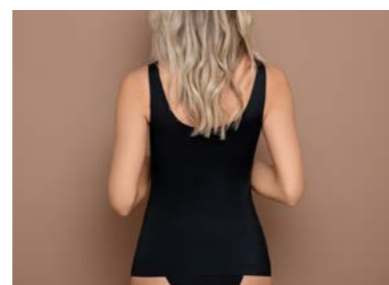
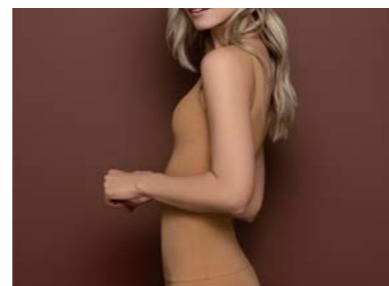
INVSTT

*Invisible tanktop*



- Invisible
- Lightweight & soft fabric
- Stitching and seam free
- Feels like a second skin
- Light control
- Hip Length
- Wide Shoulderstraps
- Removable paddings inside

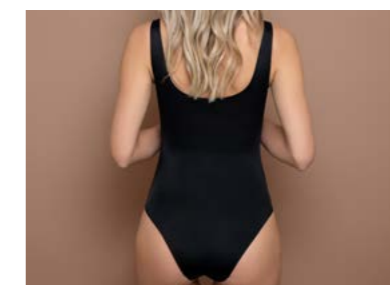
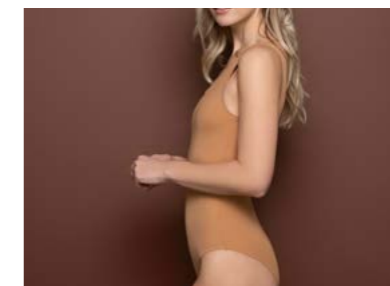
	Beige	L.brown	Black
S	1670	1680	1675
M	1671	1681	1676
L	1672	1682	1677
XL	1673	1683	1678
XXL	1674	1684	1679



INVBDY

*Invisible body*

- Invisible
- Lightweight & soft fabric
- Stitching and seam free
- Feels like a second skin

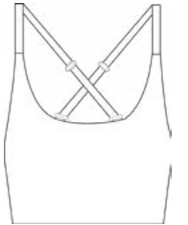


	Beige	L.brown	Black
S	1415	1425	1420
M	1416	1426	1421
L	1417	1427	1422
XL	1418	1428	1423
XXL	1419	1429	1424



INBRVN

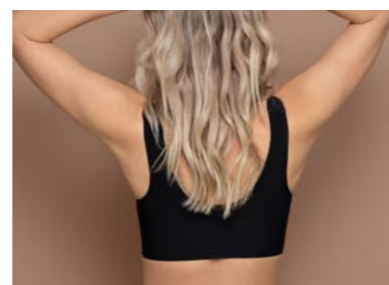
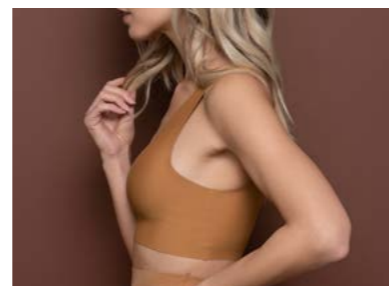
*Bra top v-neck*



INBRRN

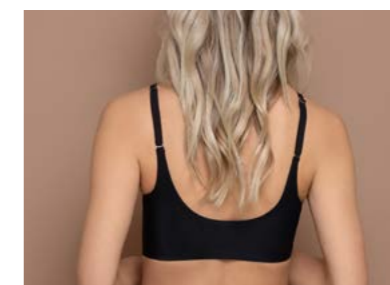
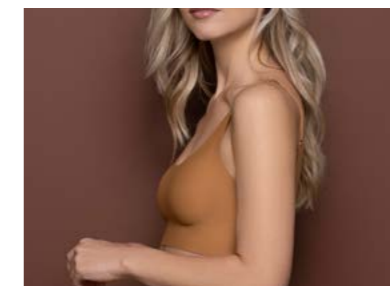
*Bra top round*

- V-neck
- Good support
- Smooth
- Perfect comfort
- Removable paddings



	Beige	L.brown	Black
S	1500	1512	1506
M	1501	1513	1507
L	1502	1514	1508
XL	1503	1515	1509
XXL	1504	1516	1510

- Round neck
- Good support
- Multifunctional straps
- Perfect comfort
- Removable paddings
- Adjustable straps



	Beige	L.brown	Black
S	1518	1530	1524
M	1519	1531	1525
L	1520	1532	1526
XL	1521	1533	1527
XXL	1522	1534	1528



INBRDP

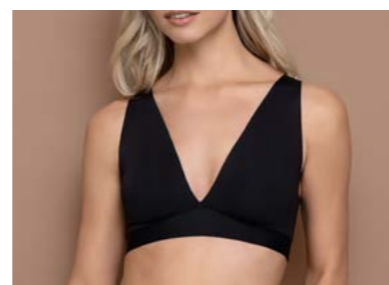
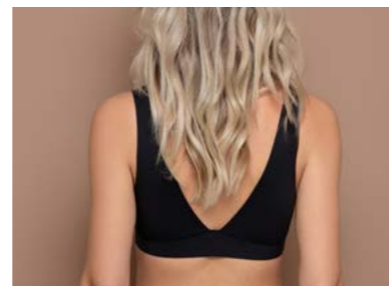
*Bra top deep plunge*



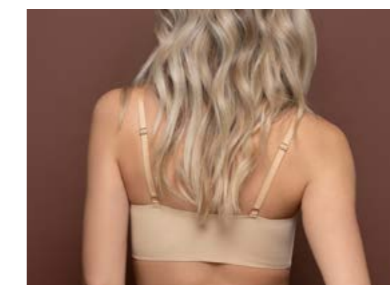
INBRPU

*Bra top push up*

- Deep plunge front & back
- Wire free
- Good supportive underbust
- Wide shoulder straps
- Perfect comfort
- Removable paddings



- Push Up Cups
- Natural Plunge
- Wire Free
- Supportive Underbust
- Clean finishing
- Adjustable Shoulderstrap



	Beige	Black
S	1610	1616
M	1611	1617
L	1612	1618
XL	1613	1619
XXL	1614	1620

	Beige	Black
S	1622	1628
M	1623	1629
L	1624	1630
XL	1625	1631
XXL	1626	1632

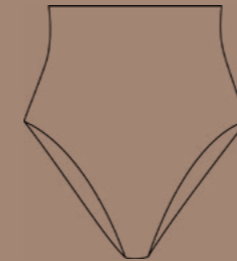


## Products

Seamless high waist thong



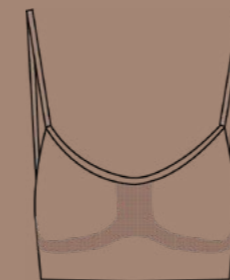
Seamless high waist brief



Seamless short



Seamless bra



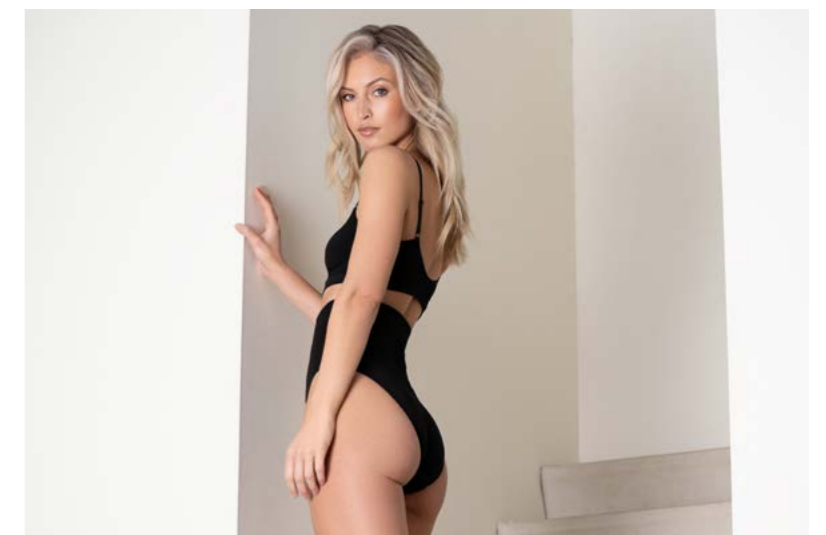
Medium shaping power, extremely soft and seamless finishing are the key elements of the Seamless collection.

The seamless workmanship allows for different thicknesses in different parts of each garment, so that we can deliver the right amount of shaping power for each portion of your body.

This collection contains of 4 running Best-Sellers at the moment, but many more to come, soon!

Expert tip:

- Do not miss our bra top. Soft but supportive & comfortable but shaping. All at the same time a definite must have!



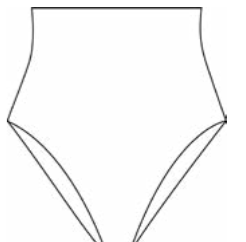
Size table  
Seamless shapewear

	NL,DE,SCANDINAVIE	FR,ES,PT	IT	UK	US
<b>XS</b>	<b>34</b>	<b>36</b>	<b>38</b>	<b>8</b>	<b>6</b>
<b>S</b>	<b>36</b>	<b>38</b>	<b>40</b>	<b>10</b>	<b>8</b>
<b>M</b>	<b>38</b>	<b>40</b>	<b>42</b>	<b>12</b>	<b>10</b>
<b>L</b>	<b>40</b>	<b>42</b>	<b>44</b>	<b>14</b>	<b>12</b>
<b>XL</b>	<b>42</b>	<b>44</b>	<b>46</b>	<b>16</b>	<b>14</b>
<b>XXL</b>	<b>44</b>	<b>46</b>	<b>48</b>	<b>18</b>	<b>16</b>
<b>XXXL</b>	<b>46</b>	<b>48</b>	<b>50</b>	<b>20</b>	<b>18</b>



SMLHWT

*Seamless high waist thong*



SMLHWB

*Seamless high waist brief*

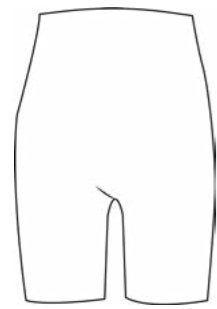
- Invisible
- Lightweight & soft fabric
- Stitching and seam free
- Feels like a second skin



- Invisible
- Lightweight & soft fabric
- Stitching and seam free
- Feels like a second skin

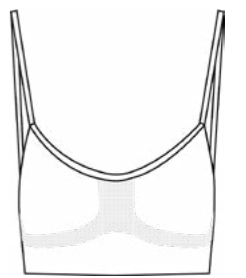
	Beige	Black
S	1120	1125
M	1121	1126
L	1122	1127
XL	1123	1128
XXL	1124	1129

	Beige	Black
S	1110	1115
M	1111	1116
L	1112	1117
XL	1113	1118
XXL	1114	1119



SMLSRT

*Seamless short*

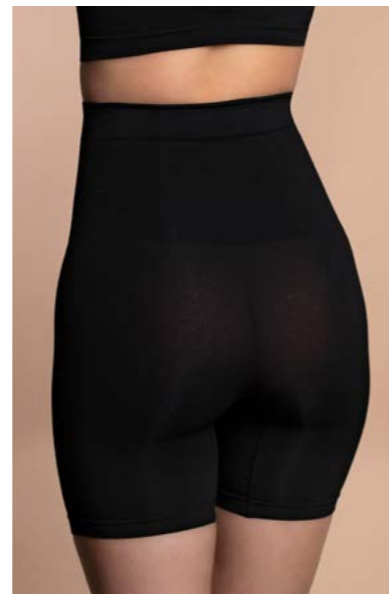


SMLBRA

*Seamless bra*

- Invisible
- Lightweight & soft fabric
- Stitching and seam free
- Feels like a second skin

- Invisible
- Lightweight & soft fabric
- Stitching and seam free
- Feels like a second skin



	Beige	Black
S	1100	1105
M	1101	1106
L	1102	1107
XL	1103	1108
XXL	1104	1109

	Beige	Black
S	1130	1135
M	1131	1136
L	1132	1137
XL	1133	1138
XXL	1134	1139

*Products*

Sculpting high waist thong



Sculpting high waist brief



Sculpting mid waist thong



Sculpting mid waist brief



Sculpting high waist short



Sculpting bodysuit padded wire free



Sculpting open bust dress



Sculpting bodysuit deep V



Wire free bra



Minimal look, clean lines, laser cut, high intensity...

The Sculpting Shapewear collection is extremely thin and thanks to its very high percentage (41%) of elastane it will deliver the best performing shaping power available in our collection so far.

The handfeel is luxurious, soft and dry. Hems are laser cut and enriched with silicone strips on the inside, to help the garments stay in place. Thanks to the thin and dry fabric, the laser cuts are extremely clean.

Doesn't matter if you are a size S or a size XXL, the sculpting collection will radically change and smoothen your figure.

Expert tip:

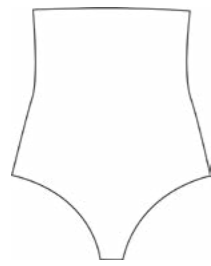
- High waist brief and thong are an every day must have and perfect to wear in all seasons.



Size table  
Sculpting shapewear

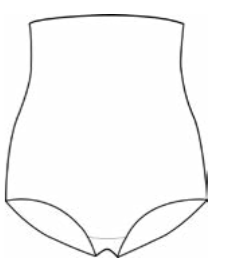
	NL,DE,SCANDINAVIE	FR,ES,PT	IT	UK	US
<b>XS</b>	<b>34</b>	<b>36</b>	<b>38</b>	<b>8</b>	<b>6</b>
<b>S</b>	<b>36</b>	<b>38</b>	<b>40</b>	<b>10</b>	<b>8</b>
<b>M</b>	<b>38</b>	<b>40</b>	<b>42</b>	<b>12</b>	<b>10</b>
<b>L</b>	<b>40</b>	<b>42</b>	<b>44</b>	<b>14</b>	<b>12</b>
<b>XL</b>	<b>42</b>	<b>44</b>	<b>46</b>	<b>16</b>	<b>14</b>
<b>XXL</b>	<b>44</b>	<b>46</b>	<b>48</b>	<b>18</b>	<b>16</b>
<b>XXXL</b>	<b>46</b>	<b>48</b>	<b>50</b>	<b>20</b>	<b>18</b>





SCPHWT

*Sculpting high waist thong*



SCPHWB

*Sculpting high waist brief*

- High control
- Strong micro fabric
- 41% elastan
- Tummy control
- Lasercut
- Silicone strip at waist



	Beige	Black
S	1310	1316
M	1311	1317
L	1312	1318
XL	1313	1319
XXL	1314	1320

- High control
- Strong micro fabric
- 41% elastan
- Tummy & core control
- Lasercut
- Silicone strip at waist and legopening



	Beige	Black
S	1322	1328
M	1323	1329
L	1324	1330
XL	1325	1331
XXL	1326	1332



SCPMWT

*Sculpting mid waist thong*



- Lasercut edges
- No-show solution under tight clothing
- High control



	Beige	Black
S	1685	1690
M	1686	1691
L	1687	1692
XL	1688	1693
XXL	1689	1964



SCPMWB

*Sculpting mid waist brief*



- Lasercut edges
- No-show solution under tight clothing
- Silicone strips in the legopening



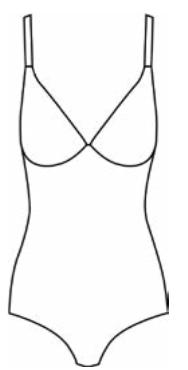
	Beige	Black
S	1695	1700
M	1696	1701
L	1697	1702
XL	1698	1703
XXL	1699	1704



*Sculpting high waist short*

- High control
- Strong micro fabric
- 41% elastan
- Tummy, core & upper leg control
- Lasercut
- Silicone strip at waist and leg opening

	Beige	Black
S	1334	1340
M	1335	1341
L	1336	1342
XL	1337	1343
XXL	1338	1344



*Sculpting bodysuit wire free*

- High control
- Strong micro fabric
- 41% elastan
- Wire free comfort bra
- Lasercut
- Adjustable straps

	Beige	Black
S	1358	1364
M	1359	1365
L	1360	1366
XL	1361	1367
XXL	1362	1368





SCPOBD



SCPBDV

*Sculpting open bust dress*

*Sculpting bodysuit deep V*

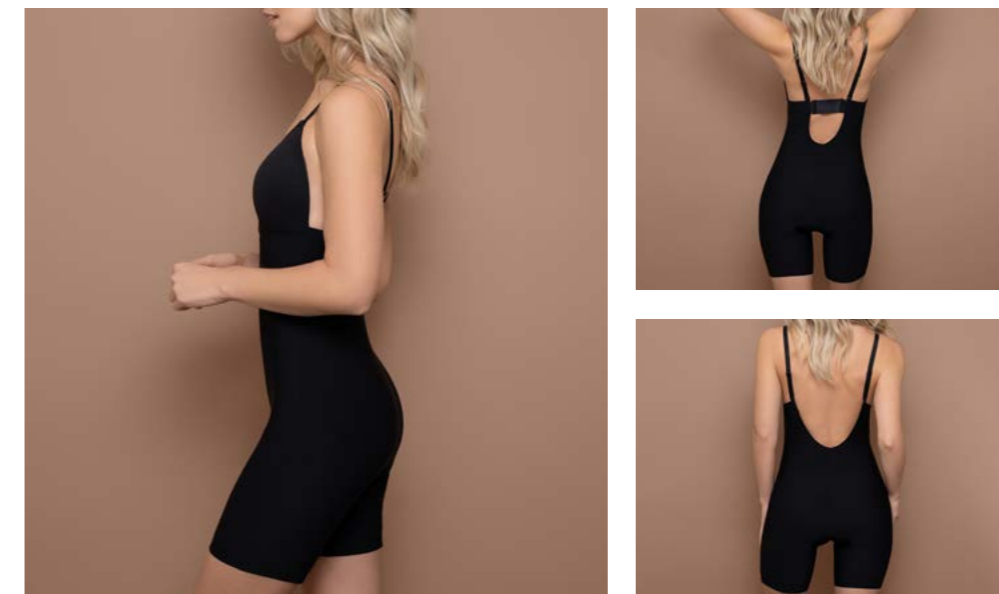


- Lasercut edges
- Perfect shaping solution for thighs, tummy and waist
- Deep plunge
- Moulded & Wire-free cups
- Silicone strips in the leg opening
- Multifunctional removable elastic backstrap
- Shoulderstraps can be worn on 2 positions

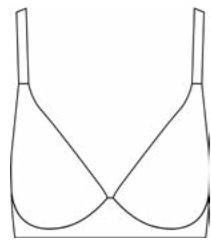
	Beige	Black
S	1382	1388
M	1383	1389
L	1384	1390
XL	1385	1391
XXL	1386	1392

- High control
- Strong micro fabric
- 41% elasthan
- Tummy & core control
- Silicone strips at the bottom opening
- Can be combined with your own bra
- Lasercut

	Beige	Black
S	1370	1376
M	1371	1377
L	1372	1378
XL	1373	1379
XXL	1374	1380



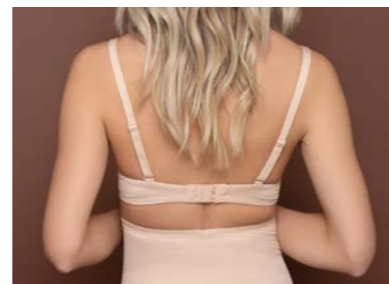
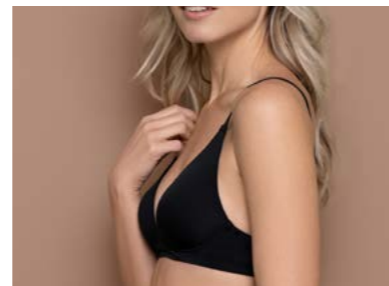
# Sculpting shapewear



SCPWFB

*Wire free bra*

- Wire free
- Good support
- Smooth
- Perfect comfort
- 4 Hooks & Eyes for adjustable fit
- Adjustable shoulder straps



	Beige	Black
S	1540	1546
M	1541	1547
L	1542	1548
XL	1543	1549
XXL	1544	1550





*Products*

Powermesh High Waist Thong



Powermesh High waist Brief



Powermesh High waist Short



Powermesh High waist Skirt



Powermesh Bodysuit Brief



Powermesh Open bust dress



Powermesh Waisttrainer



Bra top wire free lace



Who said shapewear has only to be functional?  
Do not miss our latest shapewear collection

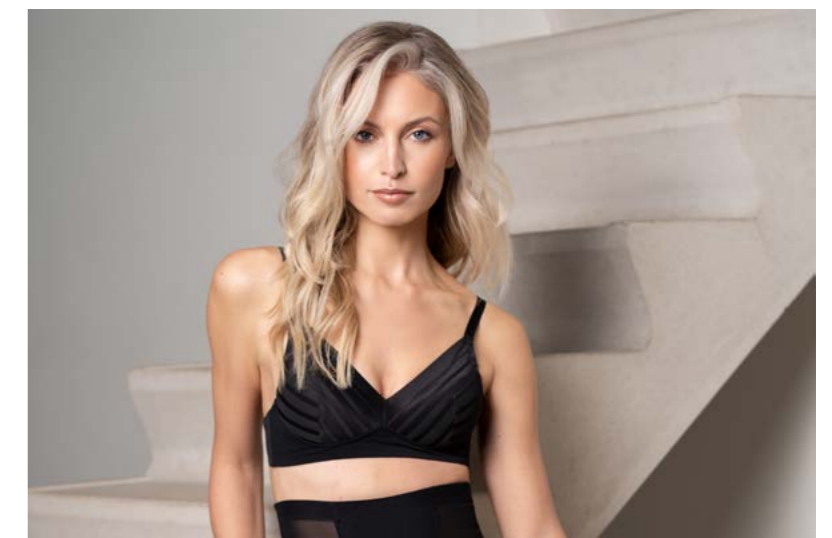
With its transparencies and geometrical jacquard lace, the Powermesh collection is feminine, sexy and shaping all in once. It enhance your female curves and make you look nice at the same time.

Perfect all year around, combines style and functionality.

Expert Tip:

- Are you looking for a wasp waist? Then do not miss our Waist Trainer...

NEW



Size table  
Powermesh shapewear

	NL,DE,SCANDINAVIE	FR,ES,PT	IT	UK	US
<b>XS</b>	<b>34</b>	<b>36</b>	<b>38</b>	<b>8</b>	<b>6</b>
<b>S</b>	<b>36</b>	<b>38</b>	<b>40</b>	<b>10</b>	<b>8</b>
<b>M</b>	<b>38</b>	<b>40</b>	<b>42</b>	<b>12</b>	<b>10</b>
<b>L</b>	<b>40</b>	<b>42</b>	<b>44</b>	<b>14</b>	<b>12</b>
<b>XL</b>	<b>42</b>	<b>44</b>	<b>46</b>	<b>16</b>	<b>14</b>
<b>XXL</b>	<b>44</b>	<b>46</b>	<b>48</b>	<b>18</b>	<b>16</b>
<b>XXXL</b>	<b>46</b>	<b>48</b>	<b>50</b>	<b>20</b>	<b>18</b>



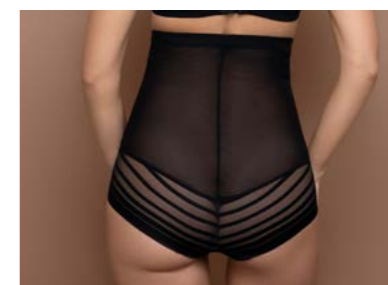
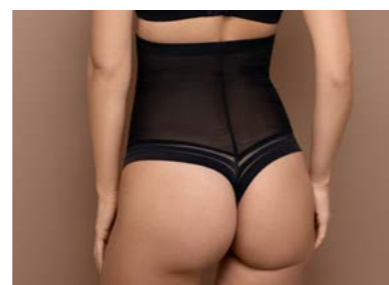
*Powermesh high waist thong*

*Powermesh high waist brief*



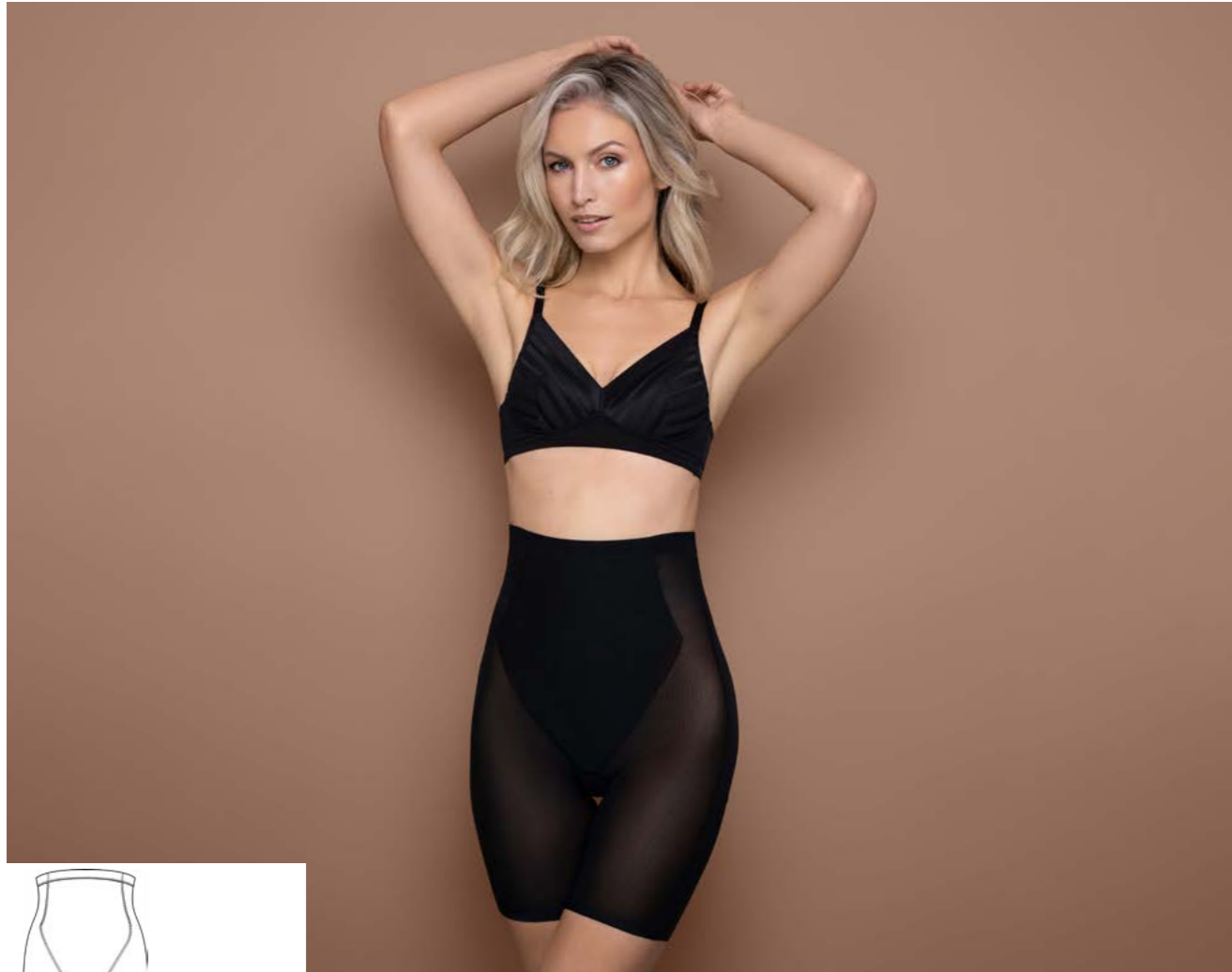
- Made of sheer & breathable mesh
- High control
- Transparent look
- Perfectly smoothing
- Double layer front panel
- Cotton crotch inside
- Silicone strip inside waistband
- Invisible lace jacquard for feminine look

- Made of sheer & breathable mesh
- High control
- Transparent look
- Perfectly smoothing
- Double layer front panel
- Cotton crotch inside
- Silicone strip inside waistband
- Invisible lace jacquard for feminine look

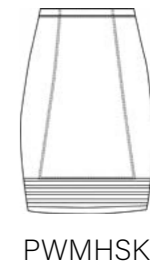


	Beige	L.brown	Black
S	1430	1435	1440
M	1431	1436	1441
L	1432	1437	1442
XL	1433	1438	1443
XXL	1434	1439	1444

	Beige	L.brown	Black
S	1141	1475	1146
M	1142	1476	1147
L	1143	1477	1148
XL	1144	1478	1149
XXL	1145	1479	1150



*Powermesh high waist short*

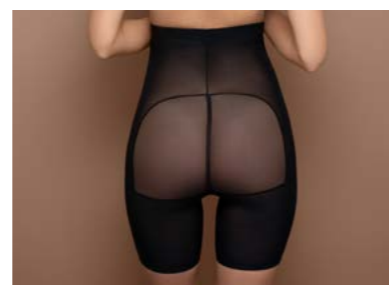


*Powermesh high waist skirt*

- Made of sheer & breathable mesh
- High control
- Transparent look
- Perfectly smoothing
- Double layer front panel
- Single layer booty enhancing pockets to prevent looking flat & pressed
- Cotton crotch inside
- Silicone strip inside waistband
- Bonded leg edges



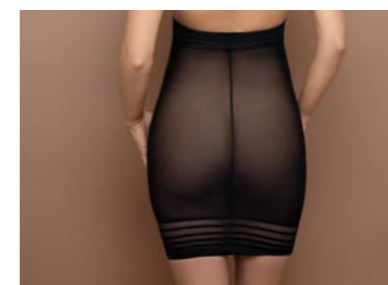
	Beige	L.brown	Black
S	1171	1490	1176
M	1172	1491	1177
L	1173	1492	1178
XL	1174	1493	1179
XXL	1175	1494	1180



- Made of sheer & breathable mesh
- High control
- Transparent look
- Perfectly smoothing
- Double layer front panel
- Extra volume in booty area
- Silicone strip inside waistband
- Invisible lace jacquard for feminine look



	Beige	L.brown	Black
S	1151	1480	1156
M	1152	1481	1157
L	1153	1482	1158
XL	1154	1483	1159
XXL	1155	1484	1160







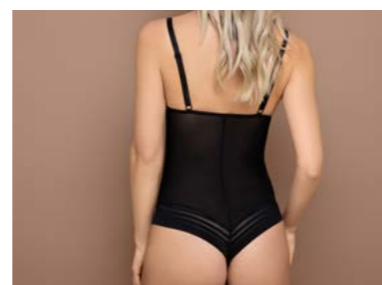
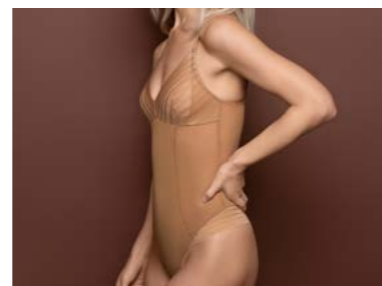
PWMBDY

*Powermesh bodysuit*



- Made of sheer & breathable mesh
- High control
- Transparent look
- Perfectly smoothing
- Double layer front panel
- Cotton crotch inside
- Button closure at crotch
- Invisible lace jacquard for feminine look

	Beige	L.brown	Black
S	1161	1485	1166
M	1162	1486	1167
L	1163	1487	1168
XL	1164	1488	1169
XXL	1165	1489	1170



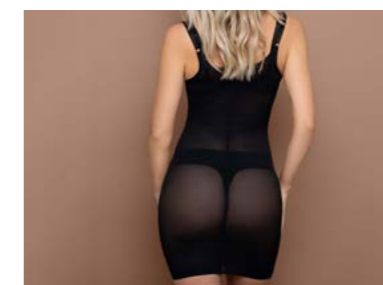
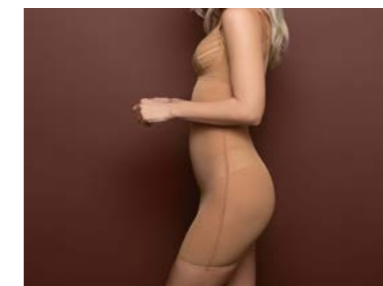
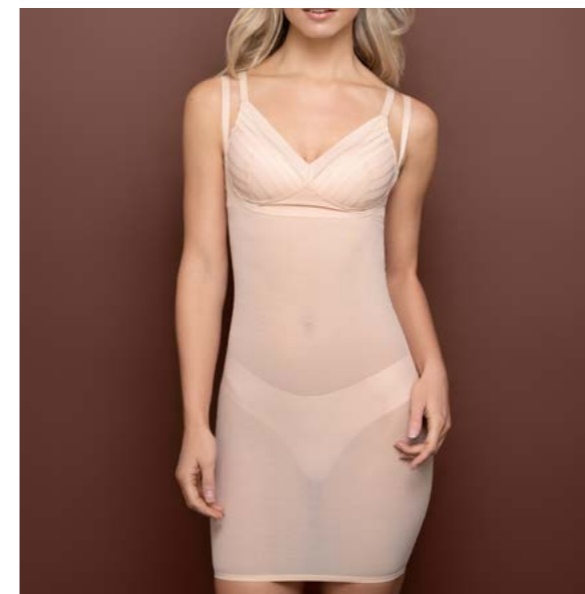
PWMOBD

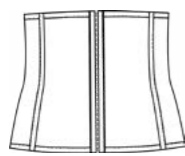
*Powermesh open bust dress*



- Made of sheer & breathable mesh
- High control
- Transparent look
- Perfectly smoothing
- Bonded edges to prevent ride up while wearing
- Extra volume in booty area
- Creates a natural push up effect

	Beige	L.brown	Black
S	1181	1495	1186
M	1182	1496	1187
L	1183	1497	1188
XL	1184	1498	1189
XXL	1185	1499	1190





PWMWTR

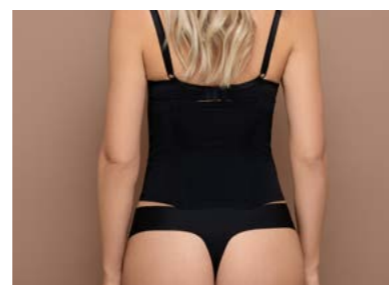
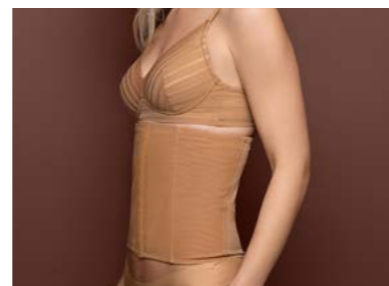
*Powermesh waisttrainer*



PWMBRT

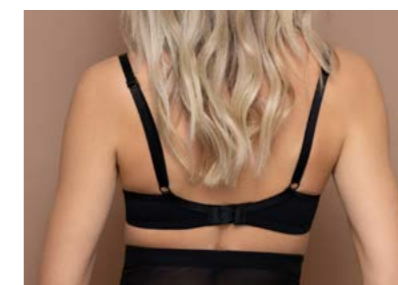
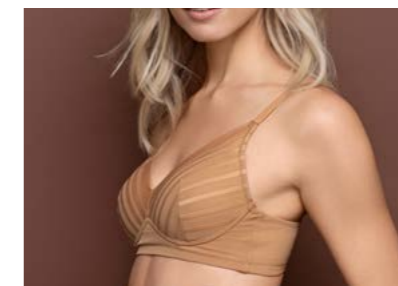
*Bra top wire free lace*

- Made of sheer & breathable mesh
- High control
- Transparent look
- Sculpting & smoothing
- Accentuate your curves
- Adjustable hook&eye at front



	Beige	L.brown	Black
S	1445	1450	1455
M	1446	1451	1456
L	1447	1452	1457
XL	1448	1453	1458
XXL	1449	1454	1459

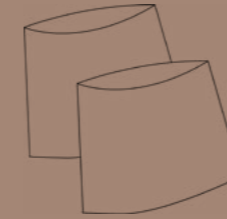
- Made of sheer & breathable mesh
- Wire free
- Adjustable 4 hook&eye
- Adjustable shoulderstraps
- Grading for larger sizes
- Double layer wing for support
- Invisible lace jacquard for feminine look



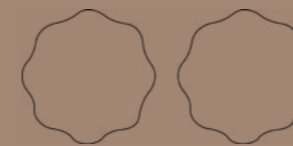
	Beige	L.brown	Black
S	1460	1465	1470
M	1461	1466	1471
L	1462	1467	1472
XL	1462	1468	1473
XXL	1464	1469	1474

## Products

Thigh bands



Nipple covers



Push-up pads



Straps & Extenders



Clips



Washing bag



Fancy nipple covers

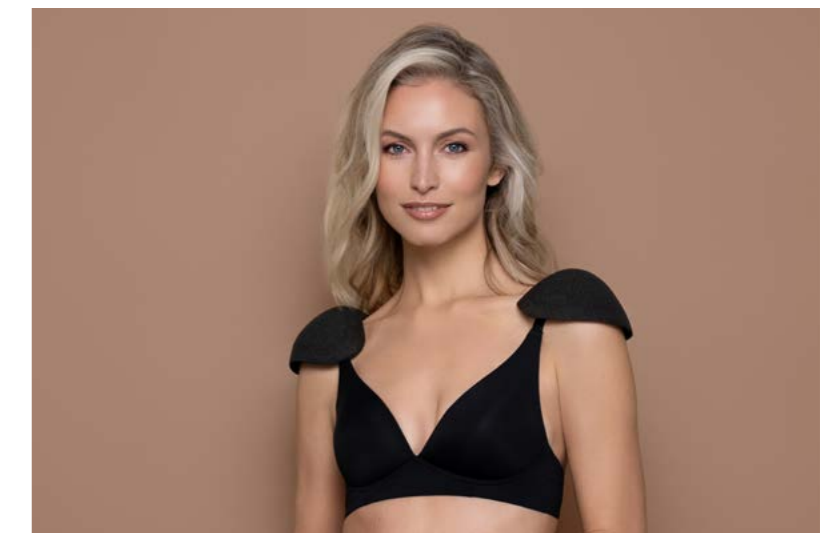


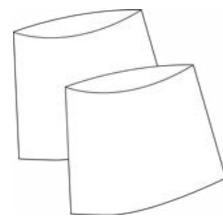
Sometimes the smallest box contains the most amazing surprise.

Discover our extensive collection of bra accessories, nipple covers and much more..

Expert Tip:

- Do not miss our thigh bands. Beige or black, in plane fabric or in lace, they are the perfect anti-rubbing thigh solution.





THGBNDFBR  
TGHBN DLC

*Thigh bands*

- Discrete and functional
- Anti-friction
- Prevents irritation and sore thighs
- Anti/slip silicone strips



	Beige	Black	Lace	Lace
S	1073	1074	1061	1072
M	1010	1014	1062	1066
L	1011	1015	1063	1067
XL	1012	1016	1064	1068
XXL	1013	1017	1065	1069

*Low back straps*



LWBS2H



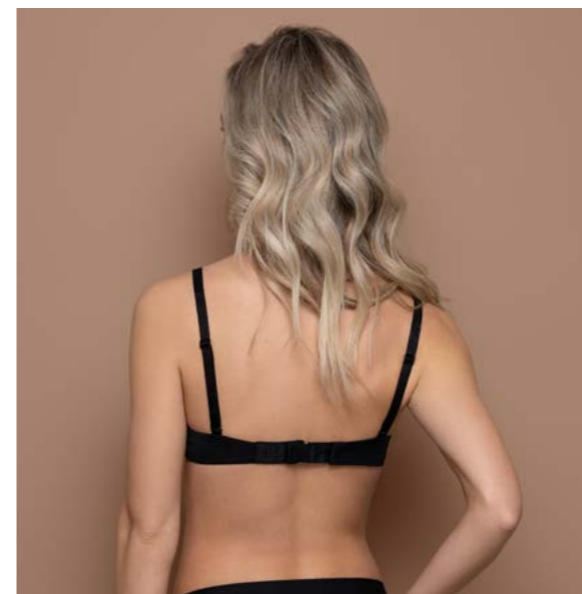
LWBS3H



- Suitable for open back dresses and tops
- Adjustable
- Perfect fit for any bra due to its flexible ends
- 3 Colours in a pack
- Size: 2 & 3-hook

2-Hook	3-Hook
1301	1302

*Bra extenders*



BREX2H



BREX3H



- Extends the bra up to 8 cm
- Perfect fit for any bra due to its flexible ends
- Ultra-soft touch
- 3 Colours in a pack
- Size: 2 & 3-hook

2-Hook	3-Hook
1019	1020

## Satin nipple covers

- Henkel adhesive
- Medium resistance against excessive sweating
- Invisible under T-shirts & casual clothing
- Available for light and dark skin colors
- Single use
- 3 pairs

STNNCV



	Beige	Brown
M	9353N	99353N
XL	9360N	99358N

## Silicone nipple covers

- Wider and thicker nipple covers
- Medium resistance against excessive sweating
- Invisible under T-shirts & casual clothing
- Available for light & dark skin colours
- Reusable for up to 25 times
- One-size
- 1 pair

SILNCV

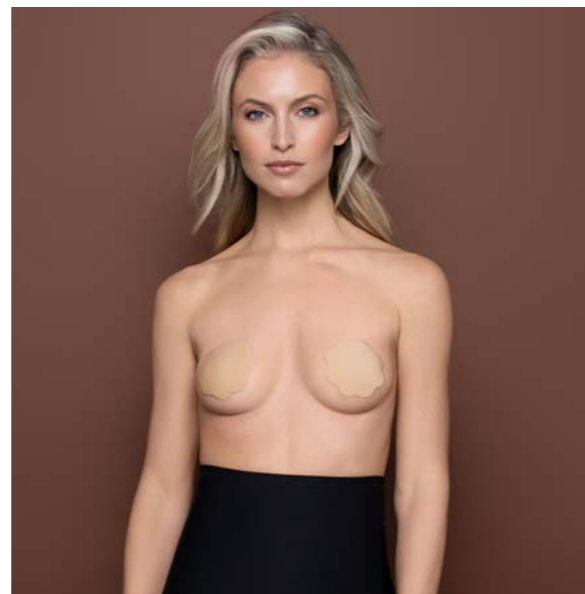


Beige	Brown
931N	1075

## Fabric nipple covers

- Wider and thicker nipple covers
- Medium resistance against excessive sweating
- Invisible under T-shirts & casual clothing
- Available for light & dark skin colors
- Reusable for up to 25 times
- One-size
- 1 pair

FBRNCV

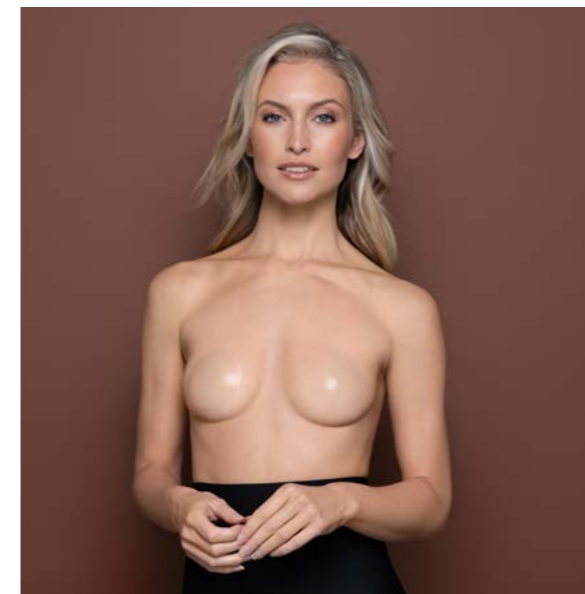


Beige	Brown
9378N	99357N

## Adhesive free nipple covers

- Adhesive free
- Wider and thicker nipple covers
- Medium resistance against excessive sweating
- Invisible under T-shirts & casual clothing
- Reusable for up to 25 times
- One-size
- 1 pair

NADNCV

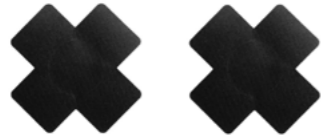


Beige
1076

### X nipple covers

- Single use (3 pairs)
- Self-adhesive
- Comfortable and soft
- One-size

XNIPCV

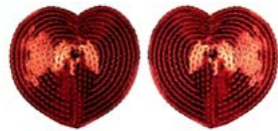


Black  
1007N

### Heart nipple covers

- Reusable (1 pair)
- Self-adhesive
- Comfortable
- One-size

HNIPCV



Red  
1006N

### Tassel nipple covers

- Reusable (1 pair)
- Self-adhesive
- Stylish tassel effect
- One-size

TNIPCV



Black  
1008N

### Transparent low back straps

TRLWBS

- Transparent low back strap
- Suitable for open back dresses and tops
- Adjustable length
- Lowers the bra by 10 cm
- Comfortable
- One-size

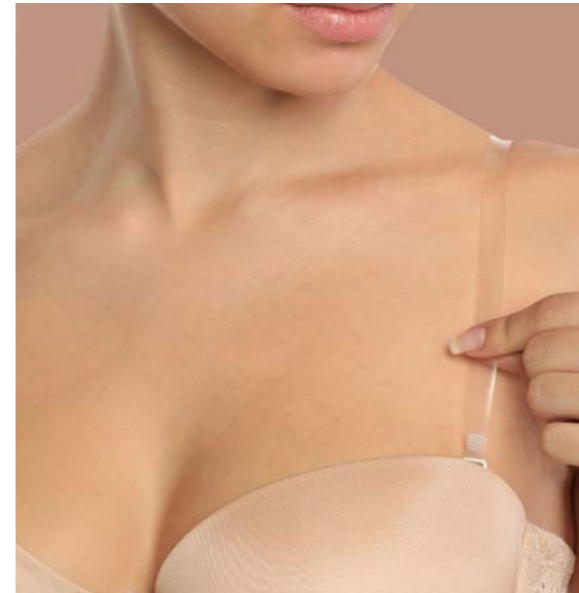


933N

### Transparent bra straps

TRBRAS

- Fits most bras
- Creates a strapless look
- Adjustable length
- Non-shiny look
- Durable
- Size: 10mm & 15mm width



10mm 15mm  
928N 828

### Washing bag

WHSBAG

- Protective
- Durable

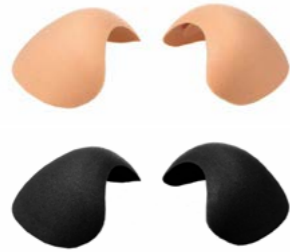


930N

## Shoulder bra pads

- Ideal for sculpting your silhouette under any outfit
- Non-slippery
- Smooth & enhanced contours
- Reusable

SHLPAD



Beige 942 Black 943



## Adhesive bikini push-up pads

ADBPUP



- Triangle shape
- Push-up effect
- Lightweight
- Soft & Comfortable
- One size

912N

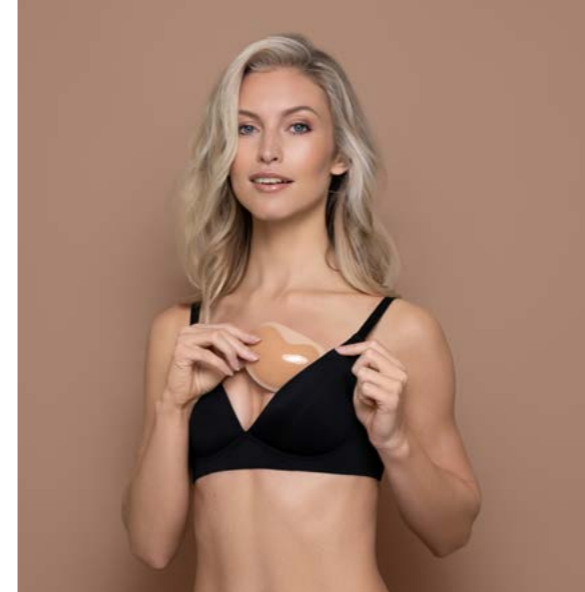
## Cushion strap pads

- Relieves the shoulders from painful straps
- Non-slippery
- Soft & comfortable
- Reusable

SAHPAD



929N



## Adhesive half push-up pads

ADHPUP



- Half cup shape
- Push-up effect
- Lightweight
- Soft & Comfortable
- One size

917N

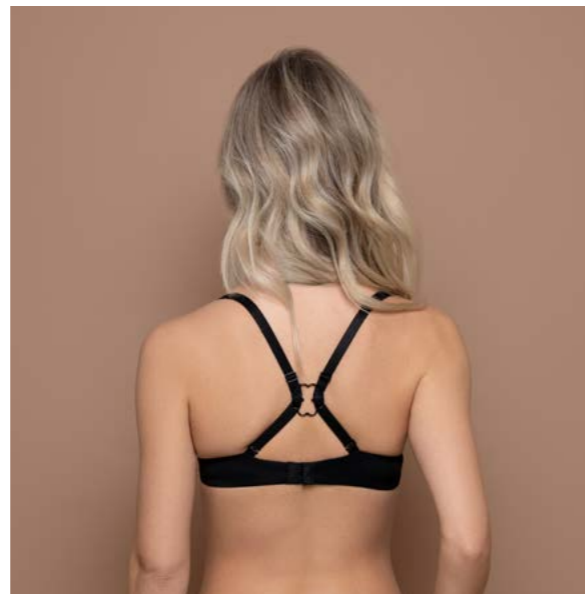
## Bra clips

- Ergonomic & Bendable
- Comfortable & adaptable
- 3 colours in a pack

BRACLP



1300



## Mineral oil push-up pads

MOLPUP



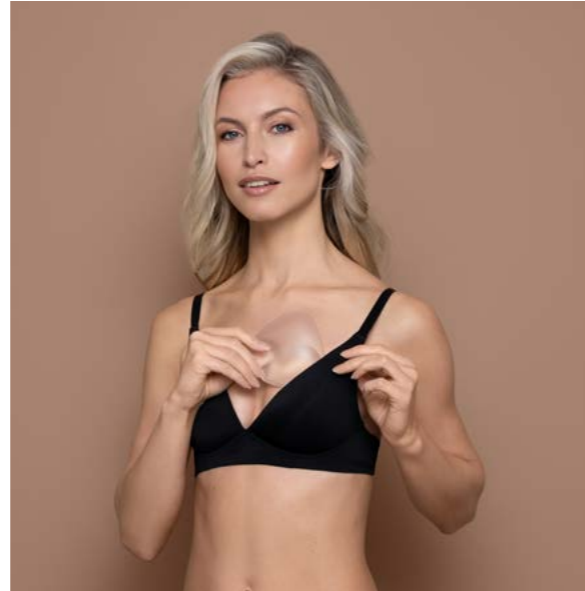
- Half cup shape
- Natural cleavage effect
- Non Adhesive
- Soft & Comfortable

A/B 1000 C/D 1001

## Waterproof bikini push-up pads

- Triangle shape
- Push-up effect
- Reusable
- Transparent
- Quality silicone
- One size

WPBPUP



932N

## Waterproof half push-up pads

- Push-up effect
- Reusable
- Transparent
- Quality silicone
- Soft & Comfortable
- One size

WPHPUP



901N



# BYE BRA

*your secret solution*